

2013 - 2015 Fishing Seasons and Rules Including Steelhead



RULES

January 2013
through
December 2015

Three-Year Book!



Photo courtesy Kathryn Powell.



Take advantage of the Idaho Fishing Planner at
<http://fishandgame.idaho.gov/ifwis/fishingPlanner/>



Free Fishing Days

Saturday, June 8, 2013
Saturday, June 14, 2014
Saturday, June 13, 2015

Partial funding of this publication
is from the Federal Aid in Sport
Fish Restoration Program as an
educational service.



Idaho Department of Fish & Game

Fishing Rules 2013 - 2015

Contents

Regional Offices, Helpful Information	10
How to Use This Booklet	11
Panhandle Region	12 - 15
Clearwater Region	16 - 19
Southwest Region	20 - 24
Magic Valley Region	25 - 29
Silver Creek Fishing Guide	30
Southeast Region	31 - 34
Upper Snake Region	35 - 38
Henry's Fork (Snake River, North Fork)	39
Salmon Region	40 - 42
Steelhead Rules	43 - 47
River Location Codes	44
Steelhead Seasons and Limits	45, 46
Steelhead Fishing in Boundary Waters	47
Permit Validation	47
Washington/Idaho Fishing Waters Boundaries	47
General Fishing Information	48 - 66
Threatened and Endangered Species	48
Proxy Statement	48
Maps and Publication Orders	49
Family Fishing Waters	50
Methods of Fishing and Equipment	50 - 51
Fish Terms and Limits	51 - 52
Boundary and Water Definitions	52 - 53
Transport, Release, and Possession of Fish	53
Salvage of Fish	53
Salmon and Steelhead Rules	53
Fishing in Boundary Waters	53
Releasing Fish	53 - 54
Taking Photographs	54
Reasons for Special Seasons	54
Reasons for Special Size and Bag Limits	54
Navigability and Public Access	55
Trespass Law	55
Sturgeon Fishing Rules	56
Fish Consumption and Advisory Information	57
Official List of Idaho Record Fish	58
Fish Identification	59 - 62
Resident/Nonresident Requirements	63
License, Tag and Permit Fees	64 - 66
Idaho Residents	64
Nonresident	65
Superhunt/Combo Application	67

New in this booklet.

- This booklet is good for three years
- Changes in kokanee fishing opportunities for the Panhandle Region
- Check for new bag limits on select urban ponds
- Standardization of rules in the Bear River and Upper Snake River drainages



**STOP AQUATIC
HITCHHIKERS!™**

**Clean, drain and dry to protect
Idaho's fishing heritage.**



Idaho Department of Fish and Game

Idaho Wildlife Policy

"All wildlife, including all wild animals, wild birds, and fish, within the state of Idaho, is hereby declared to be the property of the state of Idaho. It shall be preserved, protected, perpetuated, and managed. It shall be only captured or taken at such times or places, under such conditions, or by such means, or in such manner, as will preserve, protect, and perpetuate such wildlife, and provide for the citizens of this state and, as by law permitted to others, continued supplies of such wildlife for hunting, fishing and trapping." — Idaho Code Section 36-103

Idaho Fish and Game Commission

Randall Budge, Chairman - Southeast
Tony McDermott - Panhandle
Fred Trevey - Clearwater
Bob Barowsky - Southwest
Joan Hurlock - Magic Valley
Kenny Anderson - Upper Snake
Will Naillon - Salmon

Idaho Department of Fish and Game

600 S. Walnut St., P.O. Box 25
Boise, ID 83707
208-334-3700 - <http://fishandgame.idaho.gov>

Virgil Moore, Director
Deputy Directors
Sharon Kiefer - Jim Unsworth

Regional Offices

Panhandle Region 208-769-1414

2885 W. Kathleen Ave., Coeur d'Alene, ID 83815

Clearwater Region 208-799-5010

3316 - 16th Street, Lewiston, ID 83501

Southwest Region 208-465-8465

3101 S. Powerline Rd., Nampa, ID 83686

McCall Subregion 208-634-8137

555 Deinhard Ln., McCall, ID 83638

Magic Valley Region 208-324-4359

324 S. 417 E.; Suite #1, Jerome, ID 83338

Southeast Region 208-232-4703

1345 Barton Rd., Pocatello, ID 83204

Upper Snake Region 208-525-7290

4279 Commerce Circle, Idaho Falls, ID 83401

Salmon Region 208-756-2271

99 Hwy. 93 N., P.O. Box 1336, Salmon, ID 83467

Idaho Department of Fish and Game offices are open 8 a.m. to 5 p.m. Monday through Friday except state holidays. Offices in the Panhandle and Clearwater regions are in the Pacific Time zone; all others are in the Mountain Time zone.

Idaho Relay Service (TDD) 1-800-377-3529

Internet: <http://fishandgame.idaho.gov>

To Receive Nonresident License Applications,
Call: 208-334-3700

If you buy a nonresident license this year, you will automatically receive an application form for the following year. Applications will be mailed in November.

Other Information Numbers

- Rules booklets, nonresident license applications: 208-334-3700
- U. S. Forest Service – Boise National Forest: 208-373-4007 or 1-888-246-7523
- Bureau of Land Management – Idaho Office: 208-373-4007 or 1-888-246-7523.

To Buy a License, Tag or Permit:

- *In person, go to any Idaho Fish and Game office or license vendor throughout the state.*
- *By credit card, within the United States call 1-800-554-8685. Outside the U.S., use the Internet or mail.*
- *On the Internet, go online to <https://id.outdoorcentral.us/>. A service fee is added for this transaction.*
- *Commercial licenses, duplicate tags, documents that require proof of disability, lifetime licenses, and bear baiting permits may be purchased only at Fish and Game offices.*

This book includes important information about Idaho's fishing laws. You can be fined or jailed if you violate these laws. Please have someone who reads English explain the information in this book for you.

Información Importante

Este libro incluye información importante acerca de las leyes de pesca de Idaho. Usted puede ser multado o encarcelado si violan estas leyes. Por favor, que alguien que lee Inglés explicar la información en este libro para usted.

You may refer to this link for laws pertaining to this rule book:

Administrative Procedures Act:
<http://adminrules.idaho.gov/>

More than 30 states have entered into a "Wildlife Violator Compact." This means if your hunting, fishing or trapping license is revoked by any of the member states, all the remaining states will revoke the same license or privilege for the same time period. In addition, any nonresident who does not satisfy the requirements of an Idaho citation will have his/her hunting and fishing license revoked in their home state until those requirements are satisfied. For more information on the WVC and a complete list of member states, go to <http://fishandgame.idaho.gov/cms/about/enforcement/violator.cfm>

Idaho Fish and Game adheres to all applicable state and federal laws and regulations related to discrimination on the basis of race, color, national origin, age, gender, or handicap. If you feel you have been discriminated against in any program, activity, or facility of IDFG, or if you desire further information, please write to: Idaho Department of Fish and Game, P.O. Box 25, Boise, ID 83707; or the U.S. Fish and Wildlife Service, Division of Federal Assistance, Mailstop: MBSP-4020, 4401 N. Fairfax Drive, Arlington, VA 22203. Telephone: (703) 358-2156. This publication will be made available in alternative formats upon request. Please contact the Department of Fish and Game for assistance.

Information in this brochure summarizes the rules and is the official proclamation of the Idaho Fish and Game Commission for the taking of fish. The official rules are available from the Office of Administrative Rules, Department of Administration, Statehouse Mail, Boise, ID 83720, and may be reviewed in some libraries. Maps are for general reference only.

Costs associated with this publication are available from Idaho Fish and Game in accordance with Section 60-202, Idaho Code. 12-2013, 12-2015/350,000/31918.

To report wildlife crimes, call Citizens Against Poaching at 1-800-632-5999.

Emergency information can be relayed to Fish and Game personnel through any Idaho law enforcement agency.

How to Use This Booklet

Clearwater Region

General Fishing Season for the Clearwater Region

All Waters Open All Year except as modified in Clearwater Region Special Rule Waters on Pages 18-19.
Fishing is not allowed within the posted upstream and downstream boundary of any fish weir or trap.

General Bag and Possession Limits for the Clearwater Region

The following bag and possession limits apply to all waters of the Clearwater Region except as modified in Clearwater Region Special Rule Waters on Pages 18-19.

Bass (largemouth and smallmouth)

- Bass limit is 6, both species combined

Brook Trout

- Brook trout limit is 25

Bull Trout

- Bull trout limit is 0, catch-and-release
- **No bull trout harvest is allowed**

Kokanee

- Kokanee limit is 25, 50 in possession

Salmon (ocean-going)

- Salmon seasons and limits are set annually by the Idaho Fish and Game Commission and rules are issued in a separate brochure
- Fishing for or targeting salmon is prohibited unless a salmon season is specifically opened for that water

Steelhead (ocean-going)

- Defined as rainbow trout longer than twenty (20) inches in length in the Snake River drainage below Hells Canyon Dam, the Salmon River drainage (excluding lakes), and the Clearwater River drainage (excluding that portion above Dworshak Dam,

Special Rule Waters for the Clearwater Region (see Pages 18-19 for details)

Big Elk Creek (tributary to South Fork Clearwater River)

Clearwater River, Middle Fork
Clearwater River, North Fork
Clearwater River, South Fork

Crooked Creek
Crooked Fork Creek (tributary to Lochsa River)

Dworshak Reservoir
Elk Creek and tributaries (tributary to Dworshak Reservoir)

Elk Creek Reservoir
Fish Lake (Cedars Area)
Kelly Creek and tributaries
Lake Creek (Cedars Area)
Lochsa River
Mann Lake

General Information and Definitions pertaining to rules can be found starting on Page 50.

1. Find the region where you plan to fish

2. Find the regional fishing season dates

3. Find your fish species and bag limit

4. See if the water you want to fish is listed under Special Rule Waters

5. Turn the page for details on Special Rule Waters

TAG! YOU'RE IT!



**Did you catch a tagged fish?
Here is how to report it.**

Website: <http://fishandgame.idaho.gov>
Select the 'Fishing' page, then 'Tagging Programs' or call

Fish Tag Hotline (toll free): 1-866-258-0338

What to do when you catch a tagged fish:

Contact IDFG with this information:

- ◆ Tag number(s)
- ◆ Where the fish was caught
- ◆ Date caught
- ◆ Species
- ◆ Length of fish
- ◆ Did you keep or release the fish?



Panhandle Region

General Fishing Season for the Panhandle Region

All Waters Open All Year

Except as modified in Panhandle Region Special Rule Waters on Pages 14-15.

Fishing is not allowed within the posted upstream and downstream boundary of any fish weir or trap.

General Bag and Possession Limits for the Panhandle Region

The following bag and possession limits apply to all waters of the Panhandle Region except as modified in Panhandle Region Special Rule Waters on Pages 14-15.

Bass (largemouth and smallmouth)

- Bass limit is 6, both species combined

Brook Trout

- Brook trout limit is 25

Bull Trout

- Bull trout limit is 0, catch-and-release
- **No bull trout harvest is allowed**

Burbot

- Burbot limit is 0, catch-and-release

Chinook Salmon (land-locked)

- Chinook salmon limit is 2, none under 20 inches

Kokanee

- Kokanee limit is 15

Sturgeon

- Fishing for or targeting sturgeon in the Kootenai River is illegal

Tiger Muskie

- Tiger Muskie limit is 2, none under 40 inches

Trout includes brown trout, cutthroat trout, golden trout, lake trout, rainbow trout, splake, trout hybrids, Arctic grayling

- Trout limit is 6, all species combined

Does not include bull trout and brook trout which are listed separately

Whitefish

- Whitefish limit is 25

All Other Fish Species includes bullfrogs and crayfish

- No bag, size or possession limit

*Check for potential fish consumption advisories.
See Page 57.*

Special Rule Waters for the Panhandle Region (see Pages 14-15 for details)

Anderson Lake
Antelope Lake
Avondale Lake
Benewah Creek and tributaries
Blue Lake (Priest River Drainage)
Blue Lake (Coeur d' Alene Drainage)
Bonner Lake
Brush Lake
Chase Lake
Clark Fork River and tributaries
Coeur d' Alene Lake
Coeur d' Alene River and tributaries
Coeur d' Alene River, Little North Fork and tributaries
Coeur d' Alene River, North Fork and tributaries
Coeur d' Alene River, South Fork and tributaries
Coeur d' Alene Indian Reservation

Dawson Lake
Deep Creek and tributaries
Freeman Lake
Gamble (Gamlin) Lake
Gold Creek
Granite Creek and tributaries
Granite Lake
Grouse Creek and tributaries
Hayden Creek and tributaries
Hayden Lake
Jewel Lake
Kelso Lake
Kootenai River
Lake Creek and tributaries
Lightning Creek and tributaries
Lower Glidden Lake
Mirror Lake
Moyie River

Pack River and tributaries
Pend Oreille Lake
Pend Oreille River
Perkins Lake
Priest Lake and tributaries
Priest River and tributaries
Rapid Lightning Creek and tributaries
Robinson Lake
Roman Nose Lake #3
Round Lake (Bonner County)
St. Joe River and tributaries
St. Maries River and tributaries
Shepherd Lake
Sinclair Lake
Smith Lake
Spokane River
Trestle Creek and tributaries
Upper Priest Lake and tributaries

Special Rule Waters for the Panhandle Region

See Page 13 for fishing season, bag and possession limits, and rules that apply to all waters within the Panhandle Region except as listed below.

Anderson Lake (includes the channel to the Coeur d'Alene River)

- Bass limit is 6, only two may be largemouth bass, no largemouth bass under 16 inches

Antelope Lake - Electric motors only

Avondale Lake - Electric motors only

Benewah Creek and tributaries

- Closed to fishing

Blue Lake (Priest River drainage) - Electric motors only

Blue Lake (Coeur d'Alene drainage; includes the channel to the Coeur d'Alene River)

- Bass limit is 6, only two may be largemouth bass, no largemouth bass under 16 inches

Bonner Lake - Electric motors only

Brush Lake - Electric motors only

Chase Lake

- Electric motors only
- Bass limit is 6, only two may be largemouth bass, no largemouth bass under 16 inches

Clark Fork River and tributaries (includes Lightning Creek and tributaries)

Section: Entire river except for posted area adjacent to the Cabinet Gorge Hatchery

- Trout limit is 6, no harvest of cutthroat trout
- Rainbow trout closed to harvest December 1 through Friday before Memorial Day weekend
- No limit on lake trout
- Kokanee limit is 6

Coeur d'Alene Lake (includes Benewah, Chatcolet, Hidden and Round lakes, Coeur d'Alene River "Chain Lakes" and all tributaries to Coeur d'Alene Lake, except Benewah and Lake creeks)

- Trout limit is 6, no harvest of cutthroat trout

Coeur d'Alene River and tributaries (from the mouth to the confluence of the North Fork and South Fork)

- Trout limit is 6, no harvest of any trout with a red or orange slash below jaw

Coeur d'Alene River, Little North Fork and tributaries

Section: From the mouth upstream to Laverne Creek

- Trout limit is 6, no harvest of any trout with a red or orange slash below jaw

Section: From and including Laverne Creek upstream

- Trout limit is 6, no harvest of any trout with a red or orange slash below jaw
- No bait allowed, barbless hooks required

Coeur d'Alene River, North Fork and tributaries

Section: From the confluence of the North Fork and South Fork upstream to Yellow Dog Creek

- Trout limit is 6, no harvest of any trout with a red or orange slash below jaw

Section: From and including Yellow Dog Creek upstream

- Trout limit is 6, no harvest of any trout with a red or orange slash below jaw
- No bait allowed, barbless hooks required

Coeur d'Alene River, South Fork and tributaries

- Trout limit is 6, no harvest of any trout with a red or orange slash below jaw

Coeur d'Alene Indian Reservation - Contact the Coeur d'Alene Tribal Office

Dawson Lake - Electric motors only

Deep Creek and tributaries

- December 1 through Friday before Memorial Day weekend - closed to fishing
- Saturday of Memorial Day weekend through November 30 - Panhandle Region general rules apply

Freeman Lake - Electric motors only

Gamble (Gamlin) Lake - Electric motors only

Gold Creek (Pend Oreille Lake; includes North and West Gold creeks and tributaries)

- Closed to fishing

Granite Creek and tributaries (Pend Oreille Lake)

- Closed to fishing

Granite Lake - Electric motors only

Grouse Creek and tributaries

Section: From the mouth upstream, except for 100 yards upstream and downstream of Grouse Creek Falls.

- Trout limit is 6, no harvest of cutthroat trout
- Rainbow trout closed to harvest December 1 through Friday before Memorial Day weekend

Section: 100 yards upstream and downstream from Grouse Creek Falls

- Closed to fishing

Hayden Creek and tributaries

- December 1 through Friday before Memorial Day weekend - closed to fishing
- Saturday of Memorial Day weekend through November 30 - Panhandle Region general rules apply

Hayden Lake

- Bass limit is 6, only two may be largemouth bass, no largemouth bass under 16 inches
- Crappie limit is 6, none under 10 inches

Jewel Lake - Electric motors only

Kelso Lake - Electric motors only

Kootenai River

- Trout limit is 2, no rainbow or cutthroat trout under 16 inches
- Sturgeon - closed to fishing

Lake Creek and tributaries

- Closed to fishing

Lightning Creek and tributaries (see Clark Fork River)

Lower Glidden Lake - Electric motors only

Mirror Lake - Electric motors only

Moyie River

- Trout limit is 2

Pack River and tributaries (from the mouth at Burlington Northern Railroad Bridge upstream; also see Grouse Creek)

- Trout limit is 6, no harvest of cutthroat trout
- Rainbow trout closed to harvest December 1 through Friday before Memorial Day weekend

Pend Oreille Lake (includes Sand, Strong, Riser, Bayview, and Mirror creeks and their tributaries)

- No limit on the number of fishing rods per angler while fishing from a boat
- Bass limit is 6, only two may be largemouth bass, no largemouth bass under 16 inches
- No limit on lake trout, lake trout can be possessed in the field or in transit with head removed
- Cutthroat trout limit is 0, catch-and-release
- Kokanee limit is 6
- Mouths of Gold, North Gold, Granite and Trestle creeks are closed to fishing for a radius of 100 yards into the lake
- Rainbow trout limit is 6; only one over 20 inches

Pend Oreille River (from railroad bridge at Sandpoint downstream to Idaho-Washington border, including tributaries and sloughs to the edge of flat water)

- Bass limit is 6, only two may be largemouth bass, no largemouth bass under 16 inches
- Trout limit is 6, no harvest of cutthroat trout

Perkins Lake - Electric motors only

Priest Lake and tributaries (including Thorofare)

- Trout limit is 6, no harvest of cutthroat trout
- Kokanee limit is 6

Priest River and tributaries

(from its mouth to Priest Lake)

- Trout limit is 6, no harvest of cutthroat trout

Rapid Lightning Creek and tributaries

(see Pack River)

Robinson Lake

- Electric motors only
- Bass limit is 6, only two may be largemouth bass, no largemouth bass under 16 inches

Roman Nose Lake #3 - Electric motors only

Round Lake (Bonner County) - Electric motors only

St. Joe River and tributaries (except St. Maries River)

Section: From Coeur d'Alene Lake upstream to and including the North Fork St. Joe River

- Trout limit is 6, no harvest of any trout with a red or orange slash below jaw

Section: From the North Fork St. Joe River upstream

- Trout limit is 6, no harvest of any trout with a red or orange slash below jaw
- No bait allowed, barbless hooks required

St. Maries River and tributaries

- December 1 through Friday before Memorial Day weekend – trout limit is 2, no harvest of any trout with a red or orange slash below jaw
- Saturday of Memorial Day weekend through November 30 – trout limit is 2

Shepherd Lake - Electric motors only

Sinclair Lake - Electric motors only

Smith Lake - Electric motors only

Spokane River and tributaries

Section: From state line upstream to Post Falls Dam

- Trout limit is 2

Section: From Post Falls Dam upstream to Coeur d'Alene Lake

- Trout limit is 6, no harvest of cutthroat trout

Trestle Creek and tributaries

- Closed to fishing

Upper Priest Lake and tributaries

- Trout limit is 6, no harvest of cutthroat trout
- No bait allowed, barbless hooks required
- Kokanee limit is 6

MAPS FOR GENERAL REFERENCE ONLY

MAPS FOR GENERAL REFERENCE ONLY



STOP AQUATIC
HITCHHIKERS!™



Clearwater Region

General Fishing Season for the Clearwater Region

All Waters Open All Year

Except as modified in Clearwater Region Special Rule Waters on Pages 18-19.

Fishing is not allowed within the posted upstream and downstream boundary of any fish weir or trap.

General Bag and Possession Limits for the Clearwater Region

The following bag and possession limits apply to all waters of the Clearwater Region except as modified in Clearwater Region Special Rule Waters on Pages 18-19.

Bass (largemouth and smallmouth)

- Bass limit is 6, both species combined

Brook Trout

- Brook trout limit is 25

Bull Trout

- Bull trout limit is 0, catch-and-release
- **No bull trout harvest is allowed**

Kokanee

- Kokanee limit is 25, 50 in possession

Salmon (ocean-going)

- Salmon seasons and limits are set annually by the Idaho Fish and Game Commission and rules are issued in a separate brochure
- Fishing for or targeting salmon is prohibited unless a salmon season is specifically opened for that water

Steelhead (ocean-going)

- Defined as rainbow trout longer than twenty (20) inches in length in the Snake River drainage below Hells Canyon Dam, the Salmon River drainage (excluding lakes), and the Clearwater River drainage (excluding that portion above Dworshak Dam, and lakes)
- Fishing for or targeting steelhead is prohibited unless a steelhead season is specifically opened for that water (see pages 43-47)

Sturgeon

- Sturgeon limit is 0, catch-and-release
- Sturgeon must not be removed from the water and must be released upon landing
- Barbless hooks and sliding sinkers are required, see Page 56 for details

Tiger Muskie

- Tiger Muskie limit is 2, none under 40 inches

Trout includes cutthroat trout, rainbow trout, and trout hybrids

- In rivers and streams, trout limit is 2, all species combined
- In lakes, reservoirs, ditches and canals, trout limit is 6, all species combined

Does not include bull trout and brook trout which are listed separately

Whitefish

- Whitefish limit is 25

Protected Nongame Fish includes Pacific lamprey and sand roller

- May not be harvested or possessed

All Other Fish Species includes bullfrogs and crayfish

- No bag, size or possession limit

Check for potential fish consumption advisories. See Page 57.

Special Rule Waters for the Clearwater Region (see Pages 18-19 for details)

Clearwater River
Clearwater River, Middle Fork
Clearwater River, North Fork
Clearwater River, South Fork
Crooked Fork Creek (tributary to Lochsa River)
Dworshak Reservoir
Elk Creek and tributaries (tributary to Dworshak Reservoir)

Elk Creek Reservoir
Fish Lake (Cedars Area)
Kelly Creek and tributaries
Lake Creek (Cedars Area)
Lochsa River
Mann Lake
Moose Creek Reservoir
Palouse River and tributaries

Salmon River
Salmon River tributaries
Selway River
Snake River (Lewiston to Hells Canyon Dam)
Spring Valley Reservoir
Tolo Lake
Winchester Lake

Special Rule Waters For the Clearwater Region

See Page 17 for fishing season, bag and possession limits, and rules that apply to all waters within the Clearwater Region except as listed below.

Clearwater River

Section: From the mouth upstream to the Clearwater River Bridge at Orofino

- Trout limit is 6; only trout with a clipped adipose fin, as evidenced by a healed scar, may be kept
- Fishing between posted boundaries 100 yards upstream and downstream from the Nez Perce Tribal Hatchery Ladder (near Cherry Lane Bridge) and extending into the river channel 50 yards is prohibited
- Fishing from the shoreline or wading along the perimeter of Dworshak National Fish Hatchery is prohibited

Section: From the Clearwater River Bridge at Orofino upstream to the confluence of the South Fork and Middle Fork Clearwater rivers

- Trout limit is 6; only trout with a clipped adipose fin, as evidenced by a healed scar, may be kept
- September 1 through April 30 - No motors allowed

Clearwater River, Middle Fork

- December 1 through Friday before Memorial Day weekend - trout limit is 0, catch-and-release
- Saturday of Memorial Day weekend through November 30 - trout limit is 2, none under 14 inches
- September 1 through April 30 - No motors allowed

Clearwater River, North Fork

Section: From the mouth upstream to Dworshak Dam

- Trout limit is 6; only trout with a clipped adipose fin, as evidenced by a healed scar, may be kept
- When fishing from Ahsahka Highway 7 Bridge, it is illegal to take or attempt to take any fish downstream of the railroad bridge; fishing from the railroad bridge is prohibited
- Fishing from any watercraft or wading is prohibited between the posted line approximately 150 yards upstream from the mouth of the North Fork Clearwater River and the Ahsahka Highway 7 Bridge
- Fishing from the shoreline or wading along the perimeter of Dworshak National Fish Hatchery is prohibited

Section: From the upper end of flat water of Dworshak Reservoir upstream

- Barbless hooks required
- December 1 through Friday before Memorial Day weekend - trout limit is 0, catch-and-release, no bait allowed except maggots
- Saturday of Memorial Day weekend through November 30 - trout limit is 2, no cutthroat trout under 14 inches, no bait allowed

Clearwater River, South Fork

- Trout limit is 6; only trout with a clipped adipose fin, as evidenced by a healed scar, may be kept
- Only single-pointed barbless hooks are allowed while fishing for steelhead and salmon

Crooked Fork Creek (tributary to Lochsa River)

Section: From the mouth to Brushy Fork Creek

- Trout limit is 0, catch-and-release
- No bait allowed, barbless hooks required

Section: From Brushy Fork Creek upstream - Clearwater Region general rules apply

Dworshak Reservoir

Section: From Dworshak Dam upstream to Grandad Bridge

- Trout limit is 6, only 2 may be cutthroat trout, no cutthroat trout under 14 inches

Section: From Grandad Bridge upstream to end of flat water

- Trout limit is 6, only 2 may be cutthroat trout, no cutthroat trout under 14 inches
- December 1 through Friday before Memorial Day weekend - no bait allowed except maggots, barbless hooks required
- Saturday of Memorial Day weekend through November 30 - bait and barbed hooks allowed

Elk Creek and tributaries (tributary to Dworshak Reservoir)

- Trout limit is 6, brook trout must be counted in trout limit

Elk Creek Reservoir

- Trout limit is 6, brook trout must be counted in trout limit

Fish Lake (Cedars Area)

- No motors allowed
- December 1 through July 31 – closed to fishing
- August 1 through November 30 - Clearwater Region general rules apply

Kelly Creek and tributaries

- Trout limit is 0, catch-and-release
- No bait allowed, barbless hooks required

Lake Creek (Cedars Area)

Section: From the mouth upstream to Goose Creek - Clearwater Region general rules apply

Section: From Goose Creek to Fish Lake including all tributaries (Cedar Flat area)

- December 1 through July 31 – closed to fishing
- August 1 through November 30 - Clearwater Region general rules apply

Lochsa River

Section: From the mouth upstream to Wilderness Gateway Campground Motor Bridge, near Highway 12 milepost 122

- Barbless hooks required
- December 1 through Friday before Memorial Day weekend – trout limit is 0, catch-and-release, no bait allowed except maggots
- Saturday of Memorial Day weekend through November 30 – trout limit is 2, none under 14 inches, no bait allowed

Section: From Wilderness Gateway Campground Motor Bridge upstream to the confluence of Colt Killed Creek and Crooked Fork Creek

- Trout limit is 0, catch-and-release
- No bait allowed, barbless hooks required

Mann Lake

- Bass limit is 6, none under 12 inches
- Electric motors only
- October 1 to December 31 - No boats allowed

Moose Creek Reservoir - Electric motors only

Palouse River and tributaries

- Trout limit is 6

Salmon River

- Trout limit is 6; only trout with a clipped adipose fin, as evidenced by a healed scar, may be kept

Salmon River tributaries

Section: Those tributaries from the mouth of the Salmon River upstream to the Middle Fork Salmon River (except Crooked Creek, Little Salmon River, and South Fork Salmon River)

- Trout limit is 2

Section: Those tributaries above the mouth of Middle Fork Salmon River - See Page 42, Salmon River tributaries, Special Rule Waters

Selway River

Section: From the mouth upstream to Selway Falls cable car

- Barbless hooks required
- December 1 through Friday before Memorial Day weekend - trout limit is 0, catch-and-release, no bait allowed except maggots
- Saturday of Memorial Day weekend through November 30 – trout limit is 2, none under 14 inches, no bait allowed

Section: From Selway Falls cable car upstream to Selway Falls Bridge at Meadow Creek

- Closed to fishing

Section: From Selway Falls Bridge at Meadow Creek upstream

- Trout limit is 0, catch-and-release
- No bait allowed, barbless hooks required

Snake River (Lewiston upstream to Hells Canyon Dam)

- Trout limit is 6; only trout with a clipped adipose fin, as evidenced by a healed scar, may be kept

Spring Valley Reservoir - Electric motors only

Tolo Lake - Electric motors only

Winchester Lake - Electric motors only

Natural Shorelines are Good for Fishing

By keeping shorelines natural, you can help protect water quality and improve fish habitat. A shoreline without trees and shrubs can get washed away, making the water muddy and unsuitable for fish. If you live near a lake or a river, plant a buffer strip along the water's edge using trees, shrubs, wildflowers or other native plants. Trees and other vegetation filter pollution and provide shade, shelter, habitat, and food critical for bass, trout, and other fish to thrive and reproduce. Keep your favorite fishing spots well vegetated! For more tips and information, visit <http://water.epa.gov/type/lakes/index.cfm>.



Teach fundamental skills and attitudes to make new hunters safe, confident, and responsible.



HUNTER EDUCATION INSTRUCTORS NEEDED



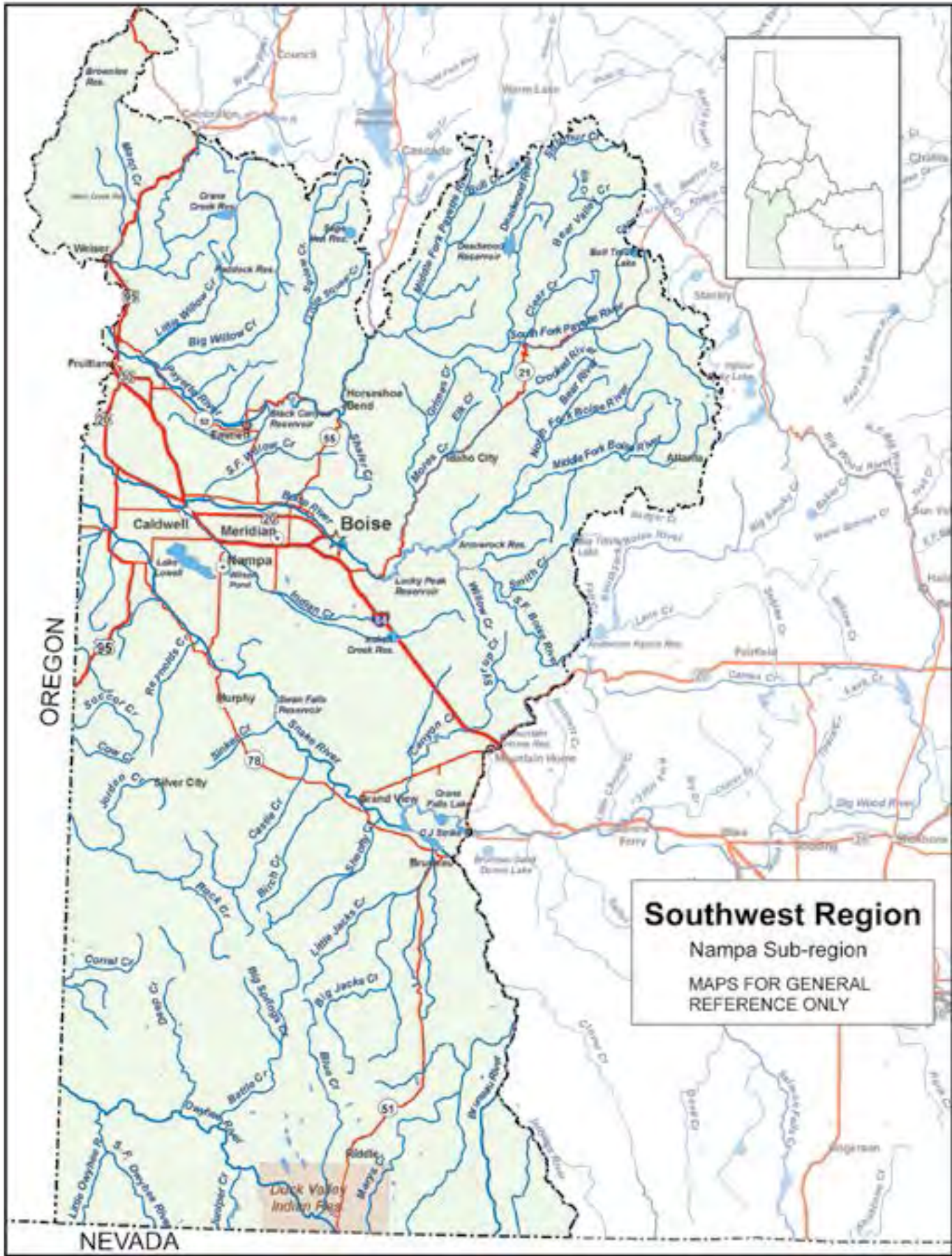
- Give back
- Set a good example
- Pass on the tradition

Get Involved Today!

Contact your nearest
Fish and Game office
for more information



photo courtesy IDFG



Southwest Region

General Fishing Season for the Southwest Region

All Waters Open All Year

Except as modified in Southwest Region Special Rule Waters on Pages 23-24.

Fishing is not allowed within the posted upstream and downstream boundary of any fish weir or trap.

General Bag and Possession Limits for the Southwest Region

The following bag and possession limits apply to all waters of the Southwest Region except as modified in Southwest Region Special Rule Waters on Pages 23-24.

Bass (largemouth and smallmouth)

- Bass limit is 6, both species combined
- None under 12 inches

Brook Trout

- Brook trout limit is 25
- Harvest allowed during any open season unless otherwise noted under Special Rules – if gear or bait restrictions are listed, they must be followed when fishing for brook trout

Bull Trout

- Bull trout limit is 0, catch-and-release
- **No bull trout harvest is allowed**

Kokanee

- Kokanee limit is 6

Salmon (ocean-going)

- Salmon seasons and limits are set annually by the Idaho Fish and Game Commission and rules are issued in a separate brochure
- Fishing for or targeting salmon is prohibited unless a salmon season is specifically opened for that water

Steelhead (ocean-going)

- Defined as rainbow trout longer than twenty (20) inches in length in the Salmon River drainage (excluding lakes). Between Hells Canyon Dam and Oxbow Dam and the Boise River from its mouth upstream to Barber Dam during steelhead seasons, steelhead are rainbow trout over twenty (20) inches in length with the adipose fin clipped (as evidenced by a healed scar)
- Fishing for or targeting steelhead is prohibited unless a steelhead season is specifically opened for that water (see pages 43–47)

Sturgeon

- Sturgeon limit is 0, catch-and-release
- Sturgeon must not be removed from the water and must be released upon landing
- Barbless hooks and sliding sinkers are required, see Page 56 for details

Tiger Muskie

- Tiger Muskie limit is 2, none under 40 inches

Trout

includes brown trout, lake trout, golden trout, Arctic grayling, cutthroat trout, rainbow trout, trout hybrids, land-locked Chinook and coho salmon

- Trout limit is 6, all species combined

Does not include bull trout and brook trout which are listed separately

Whitefish

- Whitefish limit is 25
- Harvest allowed during any open season unless otherwise noted under Special Rules – if gear or bait restrictions are listed, they must be followed when fishing for whitefish

Protected Nongame Fish includes Pacific lamprey and sand roller

- May not be harvested or possessed

All Other Fish Species includes bullfrogs and crayfish

- No bag, size or possession limit

Check for potential fish consumption advisories. See Page 57.

Special Rule Waters for the Southwest Region (See Pages 23-24 for details)

Ben Ross Reservoir	Crystal Lake	M.K. Nature Center	Salmon River, Middle Fork and tributaries
Big Creek	Deadwood Reservoir	Owyhee River and tributaries	Salmon River, South Fork and tributaries
Boise River	Deadwood Reservoir tributaries	Oxbow Reservoir	Serene Lake
Boise River, Middle Fork	Duck Valley Indian Reservation	Parkcenter Pond	Snake River
Boise River, South Fork	Granite Creek and tributaries	Payette Lake	Squaw Creek and tributaries
Brundage Reservoir and tributaries	Indian Creek Reservoir	Payette River, North Fork	Stibnite Pond (Glory Hole)
Brush Lake	Lake Lowell	Payette River, South Fork and tributaries	Tule Lake
Cascade Aquarium Pond	Lake Rock Lake	Rapid River and tributaries	Warren Creek
Chamberlain Creek and tributaries	Little Payette Lake	Roosevelt Lake	Weiser Community Pond
Crane Falls Lake	Long Lake	Sage Hen Reservoir tributaries	Wilson Springs Ponds
	Louie Lake	Salmon River	
	McDevitt Pond	Salmon River tributaries	
	Middle Fork Salmon River		

Special Rule Waters For the Southwest Region

See Page 22 for fishing seasons, bag and possession limits, and rules that apply to all waters within the Southwest Region except as listed below.

Ben Ross Reservoir

- January 1 through June 30 - bass limit is 0, catch-and-release
- July 1 through December 31 - bass limit is 2, none between 12 and 16 inches

Big Creek

- Trout limit is 0, catch-and-release
- No bait allowed, barbless hooks required

Boise River (lower) from the mouth upstream to Lucky Peak Dam

Section: From the East Boise River footbridge (near Park Center Pond) upstream about two miles to where Loggers Creek is diverted from the Boise River

- Trout limit is 2, none under 14 inches

All other sections of the lower Boise River - Southwest Region general rules apply

Boise River, Middle Fork

Section: From the confluence of the North Fork upstream to Atlanta Dam

- Rainbow trout limit is 2, none under 14 inches
- No bait allowed, barbless hooks required

All other sections of the Boise River, Middle Fork - Southwest Region general rules apply

Boise River, South Fork

Section: From Neal Bridge (Forest Road 189) upstream to Anderson Ranch Dam

- No bait allowed, one barbless hook per fly or lure
- December 1 through March 31 – trout limit is 0, catch-and-release
- April 1 through Friday before Memorial Day weekend – closed to fishing
- Saturday of Memorial Day weekend through November 30 – trout limit 2, none under 20 inches

Section: Boise River, South Fork above Anderson Ranch Dam; see Magic Valley Region rules (Page 27)

Brundage Reservoir and tributaries

- Trout limit is 2, none over 14 inches
- No bait allowed

Brush Lake (an alpine lake in North Fork Payette drainage)

- Trout limit is 2, none under 20 inches
- No bait allowed, barbless hooks required

Cascade Aquarium Pond

- Closed to fishing

Chamberlain Creek and tributaries

- Trout limit is 2

Crane Falls Lake

- Electric motors only
- Bass limit is 2, none under 20 inches

Crystal Lake (an alpine lake in the Lake Fork drainage)

- Trout limit is 2, none under 20 inches
- No bait allowed, barbless hooks required

Deadwood Reservoir

- Kokanee limit is 25 per day, 50 in possession

Deadwood Reservoir tributaries

- Trout limit is 2
- Kokanee limit is 25 per day, 50 in possession

Duck Valley Indian Reservation contact the Duck Valley Indian Tribal Office

Granite Creek and tributaries (tributary to Snake River)

- Trout limit is 2

Indian Creek Reservoir

- January 1 to June 30 - bass limit is 0, catch-and-release
- July 1 to December 31- bass limit is 2, none between 12 and 16 inches

Lake Lowell

- January 1 to June 30 - bass limit is 0, catch-and-release
- July 1 to December 31- bass limit is 2, none between 12 and 16 inches

Lake Rock Lake (an alpine lake in the Secesh River drainage)

- Trout limit is 2, none under 20 inches
- No bait allowed, barbless hooks required

Little Payette Lake

- Bass limit is 2, none under 20 inches
- Kokanee limit is 25 per day, 50 in possession

Long Lake (an alpine lake south of Warm Lake)

- Trout limit is 2, none under 20 inches
- No bait allowed, barbless hooks required

Louie Lake (an alpine lake in the Boulder Creek drainage)

- Trout limit is 2, none under 20 inches
- No bait allowed, barbless hooks required

McDevitt Pond

- Trout limit is 2

Middle Fork Salmon River (see Salmon River, Middle Fork and tributaries)**M.K. Nature Center**

- Closed to fishing

Owyhee River and tributaries

- Bass limit is 6, any size may be kept

Oxbow Reservoir (between Brownlee Dam and Oxbow Dam)

- January 1 through June 30 - bass limit is 0, catch-and-release
- July 1 through December 31 - bass limit is 2, none between 12 and 16 inches

Parkcenter Pond

- Trout limit is 2

Payette Lake

- Lake trout limit is 1, none over 30 inches

Payette River, Middle Fork and tributaries

- Southwest Region general rules apply

Payette River, North Fork

Section: From Payette Lake upstream, including tributaries

- Kokanee limit is 0, catch-and-release

All other sections of the Payette River, North Fork - Southwest Region general rules apply

Payette River, South Fork and tributaries (except the Middle Fork Payette drainage)

- Trout limit is 2

Rapid River and tributaries (tributary to the Little Salmon River)

- Trout limit is 2

Roosevelt Lake

- Trout limit is 0, catch-and-release
- No bait allowed, barbless hooks required

Sage Hen Reservoir tributaries

- December 1 through June 15 - closed to fishing
- June 16 through November 30 - trout limit is 2

Salmon River

- Trout limit is 6; only trout with a clipped adipose fin, as evidenced by a healed scar, may be kept

Salmon River tributaries

Section: Those tributaries from the mouth of the Salmon River upstream to the mouth of the Middle Fork Salmon River (except Crooked Creek, Little Salmon River, and South Fork Salmon River)

- Trout limit is 2

Section: Those tributaries from the mouth of the Middle Fork Salmon River upstream (except: North Fork Salmon River, Lemhi, Pahsimeroi, East Fork Salmon River, and Yankee Fork Salmon River)

- December 1 through Friday before Memorial Day weekend – trout limit is 0, catch-and-release
- Saturday of Memorial Day weekend through November 30 - Salmon Region general rules apply

Salmon River, Middle Fork and tributaries (includes: Bear Valley, Big, Camas, Elk, Loon, Marsh, Sulphur creeks, and tributaries)

- Trout limit is 0, catch-and-release
- No bait allowed, barbless hooks required

Salmon River, South Fork and tributaries (includes: Johnson Creek, East Fork South Fork Salmon River, Secesh River, Lake Creek, Summit Creek and tributaries)

- Trout limit is 0, catch-and-release
- No bait allowed, barbless hooks required

Serene Lake (an alpine lake in the Hazard Creek drainage)

- Trout limit is 2, none under 20 inches
- No bait allowed, barbless hooks required

Snake River

Section: Lewiston upstream to Hells Canyon Dam

- Bass limit is 6, any size may be kept
- Open to the harvest of trout all year, trout limit is 6; only trout with a clipped adipose fin, as evidenced by a healed scar, may be kept (See Page 47)

Section: Brownlee Dam upstream in the Southwest Region - Southwest Region general rules apply

Squaw Creek and tributaries

- Trout limit is 2

Stibnite Pond (Glory Hole)

- Trout limit is 0, catch-and-release
- No bait allowed, barbless hooks required

Tule Lake (an alpine lake near Warm Lake)

- Trout limit is 2, none under 20 inches
- No bait allowed, barbless hooks required

Warren Creek

- Trout limit is 2

Weiser Community Pond

- Trout limit is 2

Wilson Springs Ponds

Section: The Trophy Pond

- All species limit is 0, catch-and-release
- No bait allowed, barbless hooks required

Section: North and South Pond

- Trout limit is 2

MAPS FOR GENERAL
REFERENCE ONLY



Magic Valley Region

General Fishing Season for the Magic Valley Region

All Waters Open All Year

Except as modified in the Magic Valley Region Special Rule Waters on Pages 27-29.

Fishing is not allowed within the posted upstream and downstream boundary of any fish weir or trap.

General Bag and Possession Limits for the Magic Valley Region

The following bag and possession limits apply to all waters of the Magic Valley Region except as modified in Magic Valley Region Special Rule Waters on Pages 27-29.

Bass (largemouth and smallmouth)

- Bass limit is 6, both species combined
- None under 12 inches

Brook Trout

- Brook trout limit is 25
- Harvest allowed during any open season unless otherwise noted under Special Rules – if gear or bait restrictions are listed, they must be followed when fishing for brook trout

Bull Trout

- Bull trout limit is 0, catch-and-release
- **No bull trout harvest is allowed**

Kokanee

- Kokanee limit is 6

Sturgeon

- Sturgeon limit is 0, catch-and-release
- Sturgeon must not be removed from the water and must be released upon landing
- Barbless hooks and sliding sinkers are required, see Page 56 for details

Tiger Muskie

- Tiger Muskie limit is 2, none under 40 inches

Trout includes brown trout, golden trout, Arctic grayling, cutthroat trout, rainbow trout, and trout hybrids

- Trout limit is 6, all species combined
- In rivers and streams, only 2 of the 6 trout may be cutthroat trout

Does not include bull trout and brook trout which are listed separately

Walleye

- Walleye limit is 6

Whitefish

- Whitefish limit is 25
- Harvest allowed during any open season unless otherwise noted under Special Rules – if gear or bait restrictions are listed, they must be followed when fishing for whitefish

Protected Nongame Fish includes leatherside chub, Shoshone sculpin, bluehead sucker and Wood River sculpin

- May not be harvested or possessed

All Other Fish Species includes bullfrogs and crayfish

- No bag, size or possession limit

Check for potential fish consumption advisories. See Page 57.

Special Rule Waters for the Magic Valley Region (See Pages 27-29 for details)

Anderson Ranch Reservoir

Baker Lake

Bell Rapids (See Snake River)

Big Wood River

Big Wood River tributaries (upstream of Magic Reservoir)

Billingsley Creek

Boise River, South Fork (upstream of Anderson Ranch Dam)

Box Canyon Creek

Bruneau Dunes State Park

Carey Lake

Clear Lakes Grade Ponds (Empire Rapids Ponds)

Devils Corral Creek

Gunnel Reservoir (Six Mile)

Hagerman Wildlife Management Area

Jarbidge River and tributaries

Little Wood River

Magic Reservoir

Malad River

Niagara Springs Creek

Niagara Springs Wildlife Management Area

Riley Creek (see Hagerman Wildlife Management Area)

Silver Creek

Silver Creek tributaries

SNAKE RIVER

South Fork Boise River (see Boise River, South Fork)

Sublett Reservoir

Sublett Reservoir tributaries

Trinity Lake

Vardis Fisher Pond (Billingsley Creek State Park)

Vinyard Creek

Willow Creek (tributary to Camas Creek)

Special Rule Waters For the Magic Valley Region

See Page 26 for fishing seasons, bag and possession limits, and rules that apply to all waters within the Magic Valley Region except as listed below.

Anderson Ranch Reservoir

- Kokanee limit is 25 per day, 50 in possession

Baker Lake (an alpine lake in Blaine County)

- Trout limit is 2, none under 20 inches
- No bait allowed, barbless hooks required

Bell Rapids (See Snake River)

Big Wood River

Section: From the Richfield Canal Diversion upstream to Magic Dam

- Saturday of Memorial Day weekend through March 31 – trout limit is 6
- April 1 through Friday before Memorial Day weekend – closed to fishing

Section: From the posted boundary about 700 yards east of Hot Springs Landing upstream to Glendale Road Bridge

- December 1 through March 31 – trout limit is 0, catch-and-release
- April 1 through Friday before Memorial Day weekend – closed to fishing
- Saturday of Memorial Day weekend through November 30 – trout limit is 6

Section: From Glendale Road Bridge upstream to the Highway 75 Bridge near milepost 122.2

- December 1 through March 31 – trout limit is 0, catch-and-release
- April 1 through Friday before Memorial Day weekend – closed to fishing
- Saturday of Memorial Day weekend through November 30 – trout limit is 2, none between 12 and 16 inches

Section: From Highway 75 Bridge near milepost 122.2 upstream to Highway 75 Bridge near milepost 136.2

- Saturday of Memorial Day weekend through March 31 – trout limit is 0, catch-and-release, no bait allowed, one barbless hook per fly or lure
- April 1 through Friday before Memorial Day weekend – closed to fishing

Section: From the Highway 75 Bridge near milepost 136.2 upstream to the headwaters of the Big Wood River

- December 1 through March 31 – trout limit is 0, catch-and-release
- April 1 through Friday before Memorial Day weekend – closed to fishing
- Saturday of Memorial Day weekend through November 30 – trout limit is 6

All other sections of the Big Wood River – Magic Valley Region general rules apply

Big Wood River tributaries (upstream of Magic Reservoir)

- December 1 through March 31 – trout limit is 0, catch-and-release
- April 1 through Friday before Memorial Day weekend – closed to fishing
- Saturday of Memorial Day weekend through November 30 – trout limit is 6

Billingsley Creek

Section: From old railroad grade upstream to Tupper Grade

- Trout limit is 2, none under 20 inches
- No bait allowed

Section: From Tupper Grade upstream to Vader Grade

- December 1 through Friday before Memorial Day weekend - closed to fishing
- Saturday of Memorial Day weekend through November 30 - trout limits is 6, fly-fishing only, no bait allowed

All other sections of Billingsley Creek - Magic Valley Region general rules apply

Boise River, South Fork (upstream of Anderson Ranch Reservoir)

Section: From the mouth of Beaver Creek upstream to the mouth of Big Smoky Creek (see Southwest Region for information downstream from Anderson Ranch Dam)

- Trout limit is 2, none under 14 inches
- No bait allowed, one barbless hook per fly or lure

All other sections of the Boise River, South Fork above Anderson Ranch Dam - Magic Valley Region general rules apply

Box Canyon Creek

- Trout limit is 2

Bruneau Dunes State Park

- Electric motors only
- Bass limit is 2, none under 20 inches

Carey Lake

- Electric motors only

Clear Lakes Grade Ponds (Empire Rapids Ponds)

- Trout limit is 2

Devils Corral Creek

- Trout limit is 2

Gunnel Reservoir (Six Mile)

- December 1 through Friday before Memorial Day weekend - closed to fishing
- Saturday of Memorial Day weekend through November 30 – trout limit is 2

Hagerman Wildlife Management Area

- No motors allowed

Section: The four Anderson Ponds, the Bass Ponds, Goose Pond, and the West Highway Pond (Highway 30)

- November 1 through June 30 – closed to fishing
- July 1 through October 31 – Magic Valley Region general rules apply

Section: Oster Lakes, Riley Pond, and the Settling Pond

- November 1 through the last day of February – closed to fishing
- March 1 through October 31 – Magic Valley Region general rules apply

Section: Riley Creek from the Falls upstream to the State Fish Hatchery Diversion

- November 1 through the last day of February – closed to fishing
- March 1 through October 31 – Magic Valley Region general rules apply

All other sections of Riley Creek - Magic Valley Region general rules apply

Jarbridge River and tributaries

- Trout limit is 2

Little Wood River

Section: From the downstream end of the Taylor “Bear Tracks” Williams State Recreation Area near Highway 93 milepost 190, to the upstream end of the Recreation Area near Highway 93 milepost 192.5, as posted

- Trout limit is 0, catch-and-release
- Fly-fishing only, barbless hooks required

Section: From Baugh Creek upstream (including tributaries)

- Trout limit is 2

All other sections of the Little Wood River - Magic Valley Region general rules apply

Magic Reservoir (from Magic Dam to the posted boundary about 700 yards east of Hot Springs Landing)

- Bass limit is 6, any size may be kept

Malad River

Section: From its mouth upstream to the Interstate 84 bridge at Malad Gorge

- December 1 through Friday before Memorial Day weekend – trout limit is 0, catch-and-release
- Saturday of Memorial Day weekend to November 30 - trout limit is 6

Section: Malad River upstream of the Interstate 84 Bridge - Magic Valley Region general rules apply

Niagara Springs Creek

Section: From the Niagara Springs Steelhead Hatchery intake pool (above the lowest fall) upstream to the spring sources as posted

- Closed to fishing

Section: Niagara Springs Creek from below the intake pool to the Snake River - Magic Valley Region general rules apply

Niagara Springs Wildlife Management Area – except Snake River

- Trout limit is 2

Silver Creek

Section: From its mouth upstream to Highway 93 - Magic Valley Region general rules apply

Section: From Highway 93 upstream to the County Road Bridge north of Picabo (See Page 30, ④ on the Silver Creek map)

- No motors
- All diversion ponds have the same rules as the connected stream
- December 1 through the last day of February – trout limit is 0, catch-and-release
- March 1 through Friday before Memorial Day weekend – closed to fishing
- Saturday of Memorial Day weekend through November 30 – trout limit is 6

Section: From the County Road Bridge north of Picabo upstream to the bridge near milepost 187.2 on Highway 20 west of Picabo (See Page 30, ③ on the Silver Creek map)

- No motors
- All diversion ponds have the same rules as the connected stream
- December 1 through the last day of February – trout limit is 0, catch-and-release
- March 1 through Friday before Memorial Day weekend – closed to fishing
- Saturday of Memorial Day weekend through November 30 – trout limit is 2, none between 12 and 16 inches

Section: From the bridge near milepost 187.2 on Highway 20 west of Picabo upstream to the road right-of-way fence on the west side of Kilpatrick Bridge (See Page 30, ② on the Silver Creek map)

- No motors
- All diversion ponds have the same rules as the connected stream
- No fishing from rafts or boats; float tubes are allowed
- December 1 through the Friday before Memorial Day weekend – closed to fishing
- Saturday of Memorial Day weekend through November 30 – trout limit is 0, catch-and-release, no bait allowed, one barbless hook per fly or lure

Silver Creek continued on Page 29

Section: From the road right-of-way on the west side of Kilpatrick Bridge upstream and within the Nature Conservancy (See Page 30, ① on the Silver Creek map)

- No motors
- All diversion ponds have the same rules as the connected stream
- No fishing from rafts or boats; float tubes are allowed
- December 1 through the Friday before Memorial Day weekend – closed to fishing
- Saturday of Memorial Day weekend through November 30 – trout limit is 0, catch-and-release, fly-fishing only, no bait allowed, one barbless hook per fly

Silver Creek tributaries

Section: All tributaries except those within the Nature Conservancy Silver Creek Preserve and posted Hayspur Fish Hatchery waters

- No motors
- All diversion ponds have the same rules as the connected stream
- December 1 through the Friday before Memorial Day weekend – closed to fishing
- Saturday of Memorial Day weekend through November 30 – trout limit is 2

Section: All tributaries within the Nature Conservancy Silver Creek Preserve property

- No motors
- All diversion ponds have the same rules as the connected stream
- No fishing from rafts or boats; float tubes are allowed
- December 1 through the Friday before Memorial Day weekend – closed to fishing
- Saturday of Memorial Day weekend through November 30 – trout limit is 0, catch-and-release, fly-fishing only, no bait allowed, one barbless hook per fly

Section: The posted sections of Loving and Butte creeks on Hayspur Fish Hatchery property

- No motors
- All diversion ponds have the same rules as the connected stream
- December 1 through the Friday before Memorial Day weekend - closed to fishing.
- Saturday of Memorial Day weekend through November 30 - trout limit is 2, none under 20 inches

Snake River

Section: From Lower Salmon Falls Dam (Bell Rapids area) upstream to Upper Salmon Falls Dam (0.3 miles below Owsley Bridge)

- January 1 through June 30 - bass limit is 0, catch-and-release
- July 1 through December 31 - bass limit is 2, none between 12 and 16 inches

All other sections of the Snake River including reservoirs within the Magic Valley Region - Magic Valley Region general rules apply

Sublett Reservoir (see also Sublett Reservoir tributaries)

- December 1 through Friday before Memorial Day weekend - closed to fishing
- Saturday of Memorial Day weekend through November 30 - trout limit is 6

Sublett Reservoir tributaries

- December 1 through Friday before Memorial Day weekend - closed to fishing
- Saturday of Memorial Day weekend through November 30 - trout limit is 2

Trinity Lakes

- No motors

Vardis Fisher Pond (Billingsley Creek State Park)

- Trout limit is 2, none under 20 inches
- No bait allowed

Vineyard Creek

- November 1 through Friday before Memorial Day weekend - trout limit is 0, catch-and-release
- Saturday of Memorial Day weekend through October 31 - trout limit is 2

Willow Creek (tributary to Camas Creek)

- Trout limit is 2

Do you enjoy Idaho's Wildlife?

A portion of a Wildlife License Plate purchase and/or renewal contributes to Idaho's Wildlife:

- Conservation
- Education Programs
- Habitat Improvements
- Wildlife Publications

Your support helps protect Idaho's wildlife heritage for present and future generations!

GO WILD! BUY WILD!
Enjoy the Wild!

Purchase one at your local DMV or on line at:
www.accessidaho.org/secure/itd/personalized/plates.html

The graphic features three license plates: ELK, TROUT, and BLBRD. The BLBRD plate is shown in a larger, tilted format. The background includes a silhouette of a mountain range and a fish.

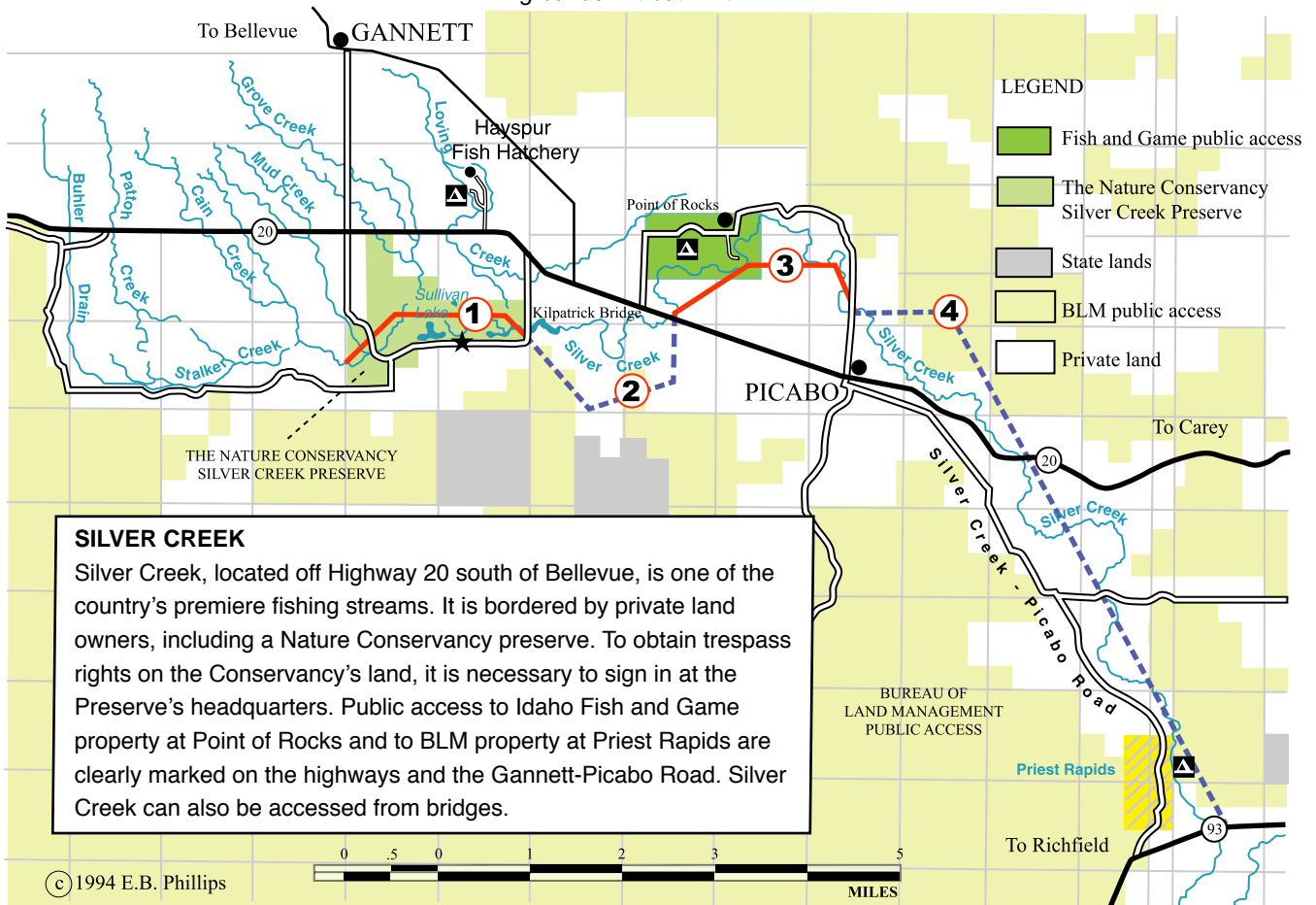
Silver Creek Fishing Guide

Look for Signs!

- 1 Fly fishing only. Catch-and-release. No fishing from raft or boat.
★ The Nature Conservancy preserve headquarters. Sign in to secure trespass permit.
- 2 Catch-and-release. No bait allowed. No fishing from raft or boat.
- 3 Two trout limit. All trout 12 -16 inches must be released. Bait allowed.
- 4 Six fish allowed.

See Pages 28-29 for detailed locations and complete listing of exceptions.

All tributaries **except** within the Nature Conservancy and Hayspur Hatchery grounds: 2 trout limit.



FREE FISHING DAY! EVERYONE WELCOME!

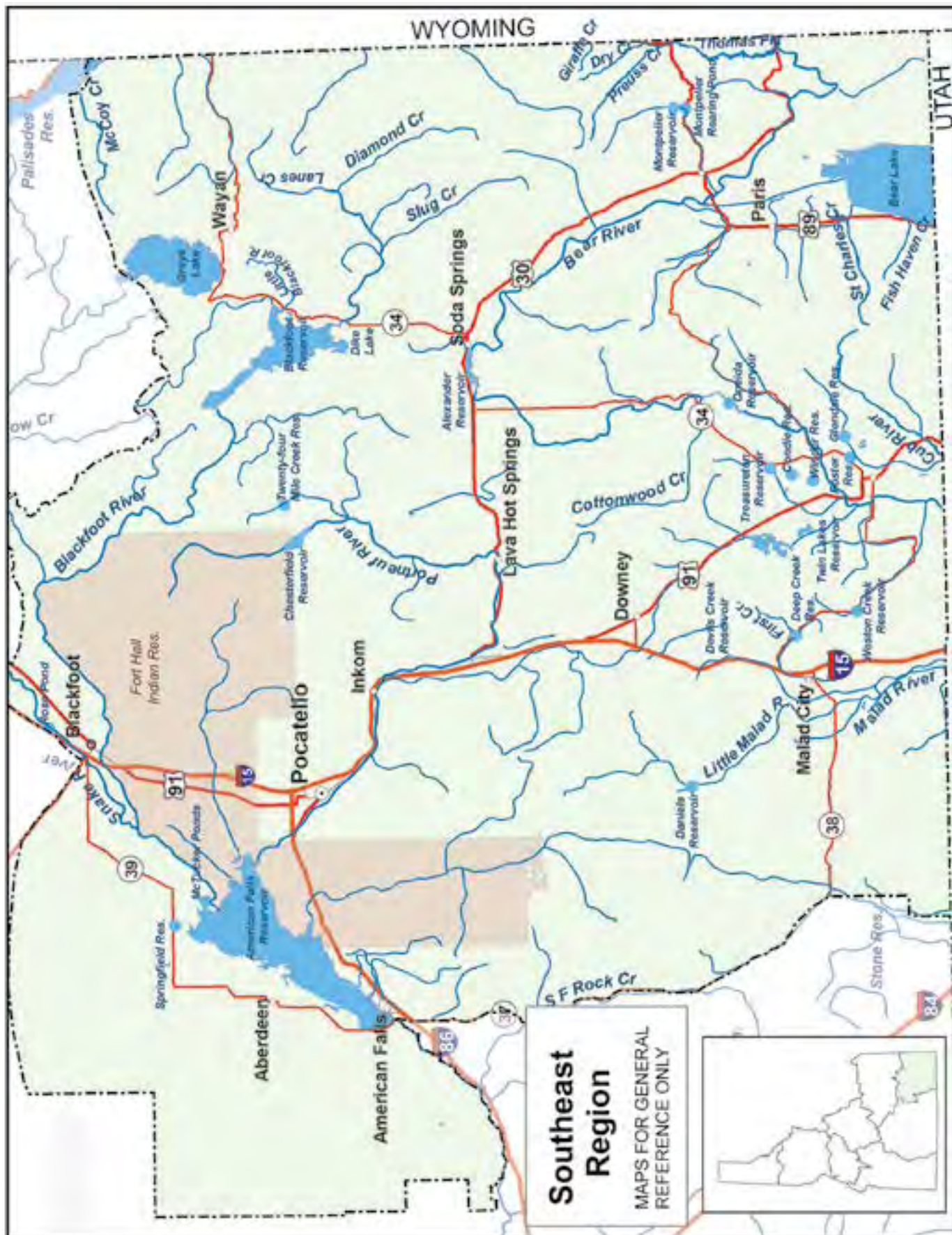
(No license required)

Saturday, June 8, 2013
Saturday, June 14, 2014
Saturday, June 13, 2015

- How-to clinics
- Tackle available
- Questions answered
- Skills development

For more information, contact the Fish and Game office nearest you.





Southeast Region

General Fishing Season for the Southeast Region

All Waters Open All Year

except as modified in Southeast Region Special Rule Waters on Pages 33-34.

Fishing is not allowed within the posted upstream and downstream boundary of any fish weir or trap.

General Bag and Possession Limits for the Southeast Region

The following bag and possession limits apply to all waters of the Southeast Region except as modified in Southeast Region Special Rule Waters on Pages 33-34.

Bass (largemouth and smallmouth)

- Bass limit is 6, both species combined
- None under 12 inches

Brook Trout

- Brook trout limit is 25
- Harvest allowed during any open season unless otherwise noted under Special Rules – if gear or bait restrictions are listed, they must be followed when fishing for brook trout

Cisco (Bear Lake only)

- Cisco limit is 30

Kokanee

- Kokanee limit is 6

Sturgeon

- Sturgeon limit is 0, catch-and-release
- Sturgeon must not be removed from the water and must be released upon landing
- Barbless hooks and sliding sinkers are required, see Page 56 for details

Tiger Muskie

- Tiger Muskie limit is 2, none under 40 inches

Trout includes brown trout, lake trout, cutthroat trout, rainbow trout, and trout hybrids

- Trout limit is 6, all species combined
- In rivers and streams, only 2 of the 6 trout may be cutthroat trout

Does not include brook trout which are listed separately

Whitefish

- Whitefish limit is 25
- Harvest allowed during any open season unless otherwise noted under Special Rules – if gear or bait restrictions are listed, they must be followed when fishing for whitefish

Protected Nongame Fish includes leatherside chub, bluehead sucker and Bear Lake sculpin

- May not be harvested or possessed

All Other Fish Species includes bullfrogs and crayfish

- No bag, size or possession limit

Check for potential fish consumption advisories. See Page 57.

Special Rule Waters for the Southeast Region (see Pages 33-34 for details)

Bear Lake
Bear River
Bear River tributaries
Blackfoot Reservoir
Blackfoot River and tributaries
Chesterfield Reservoir
Condie Reservoir
Daniels Reservoir
Deep Creek Reservoir
Diamond Creek and tributaries
Dike Lake

Edson Fichter Pond
Fish Haven Creek
First Creek
Fort Hall Indian Reservation
Foster Reservoir
Glendale Reservoir
Lanes Creek and tributaries
Little Blackfoot River and tributaries
McCoy Creek and tributaries
Montpelier Reservoir
Montpelier Rearing Pond

Oneida Reservoir
Portneuf River
Rose Pond
St. Charles Creek
Slug Creek and tributaries
Snake River
Springfield Reservoir
Treasureton Reservoir
Twenty-Four Mile Reservoir
Weston Reservoir
Winder Reservoir

Special Rule Waters For the Southeast Region

See Page 32 for fishing seasons, bag and possession limits, and rules that apply to all waters within the Southeast Region except as listed below.

Bear Lake

- From the mouth of St. Charles Creek for a radius of 300 yards into the lake is closed to fishing from April 16 through June 30
- Not more than 2 baited hooks, flies, or lures per line.
- One line only when ice fishing. Two-lines permitted when ice fishing with a two-pole permit
- Trout limit is 2; only cutthroat trout with a clipped adipose fin, as evidenced by a healed scar, may be kept (See Page 47)
- Cisco limit is 30; dip-netting permitted January 1 through February 15. Dip nets no larger than 18 inches in any dimension. Any size hole may be cut through the ice to catch cisco
- Whitefish limit is 10

Bear River

Section: From the Utah state line upstream to Oneida Dam

- Trout limit is 2, no harvest of cutthroat trout

Section: From the confluence with Oneida Reservoir upstream to the Wyoming state line

- Trout limit is 6, no harvest of cutthroat trout

Bear River tributaries (all tributaries including the Cub River and Thomas Fork Bear River)

- Trout limit is 6, no harvest of cutthroat trout

Blackfoot Reservoir

- Trout limit is 6, no harvest of cutthroat trout

Blackfoot River and tributaries

Section: From the confluence with the Snake River upstream to Blackfoot Dam (Government Dam) - Southeast Region general rules apply

Section: Upstream from Blackfoot Reservoir

- December 1 through June 30 - closed to fishing
- July 1 through November 30 - trout limit is 6, no harvest of cutthroat trout, no bait allowed, barbless hooks required

Chesterfield Reservoir

- Trout limit is 2

Condie Reservoir

- Bass limit is 2, none under 20 inches

Daniels Reservoir

- Trout limit is 2, none under 20 inches
- One line only when ice fishing
- No bait allowed, barbless hooks required

Deep Creek Reservoir

- Trout limit is 6, only 2 may be cutthroat trout

Diamond Creek and tributaries

- December 1 through June 30 - closed to fishing
- July 1 through November 30 - trout limit is 6, no harvest of cutthroat trout, no bait allowed, barbless hooks required

Dike Lake

- No motors

Edson Fichter Pond

- Trout limit is 2

Fish Haven Creek

Section: From the confluence with Bear Lake upstream to the Cache National Forest boundary

- December 1 through June 30 - closed to fishing
- July 1 through November 30 - Southeast Region general rules apply

Section: Fish Haven Creek upstream of the Cache National Forest boundary - Southeast Region general rules apply

First Creek

- December 1 through June 14 - closed to fishing
- June 15 through November 30 - Southeast Region general rules apply

Fort Hall Indian Reservation - contact Shoshone-Bannock Tribal Office

Foster Reservoir

- Electric motors only

Glendale Reservoir

- Bass limit is 2, none under 16 inches

Lanes Creek and tributaries

- December 1 through June 30 - closed to fishing
- July 1 through November 30 - trout limit is 6, no harvest of cutthroat trout, no bait allowed, barbless hooks required

Little Blackfoot River and tributaries

- Trout limit is 6, no harvest of cutthroat trout

McCoy Creek and tributaries

- Trout limit is 6, no harvest of cutthroat trout

Montpelier Reservoir

- Electric motors only

Montpelier Rearing Pond

- Trout limit is 2

Oneida Reservoir

- Walleye limit is 6

Portneuf River

Section: In Lava Hot Springs, from the Center Street Bridge upstream to the East Main Street Bridge

- Closed to fishing

Section: From above East Main Street bridge in Lava Hot Springs upstream to Chesterfield Reservoir

- December 1 through Friday before Memorial Day weekend - trout limit is 0, catch-and-release, no bait allowed, barbless hooks required
- Saturday of Memorial Day weekend through November 30 - trout limit is 6, no harvest of cutthroat trout

All other sections of the Portneuf River: except for within the Fort Hall Indian Reservation (contact Shoshone-Bannock Tribal Office): Southeast Region general rules apply

Rose Pond

- Electric motors only

St. Charles Creek

Section: Both forks of St. Charles Creek upstream to the Cache National Forest boundary

- December 1 through June 30 - closed to fishing
- July 1 through November 30 - Southeast Region general rules apply

Section: St. Charles Creek upstream of Cache National Forest boundary - Southeast Region general rules apply

Slug Creek and tributaries

- December 1 through June 30 - closed to fishing
- July 1 through November 30 - trout limit is 6, no harvest of cutthroat trout, no bait allowed

Snake River

Section: From the downstream side of the Gifford Springs boat fishing zone (western boundary) upstream to Eagle Rock

- Bass limit is 2, any size may be kept
- Trout limit is 6, only 2 may be cutthroat trout

Section: From Eagle Rock upstream to American Falls Dam

- October 16 through Friday before Memorial Day weekend – limit is 0 for game fish species, catch-and-release, no bait allowed, barbless hooks required
- Saturday of Memorial Day weekend through October 15 – bass limit is 2, any size; trout limit is 6, only 2 may be cutthroat trout, only 2 trout over 16 inches

Section: From American Falls Reservoir upstream to the confluence of Henrys (North) and South forks

- Trout limit is 6, only 2 may be cutthroat trout

Springfield Reservoir

- Trout limit is 2, none under 20 inches
- One line only when ice fishing
- No bait allowed, barbless hooks required

Treasureton Reservoir

- Trout limit is 2, none under 20 inches
- No size or bag limit on bass
- One line only when ice fishing
- No bait allowed, barbless hooks required

Twenty-Four Mile Reservoir

- No motors
- Trout limit is 2, none under 20 inches
- One line only when ice fishing
- No bait allowed, barbless hooks required

Weston Reservoir

- No fishing from boats or rafts, float tubes allowed
- January 1 through June 30 - bass limit is 0, catch-and-release
- July 1 through December 31 - bass limit is 2, none between 12 and 16 inches

Winder Reservoir

- No motors



Did you know that Idaho Fish and Game regulates organized fishing tournaments to guarantee fish populations are protected and impacts to public access are minimized?

If you are holding an event that has

- A LIVE FISH WEIGH-IN;
- AWARDS \$1,000 OR MORE IN PRIZES
- OR IS EXPECTED TO DRAW 20 OR MORE PARTICIPANTS

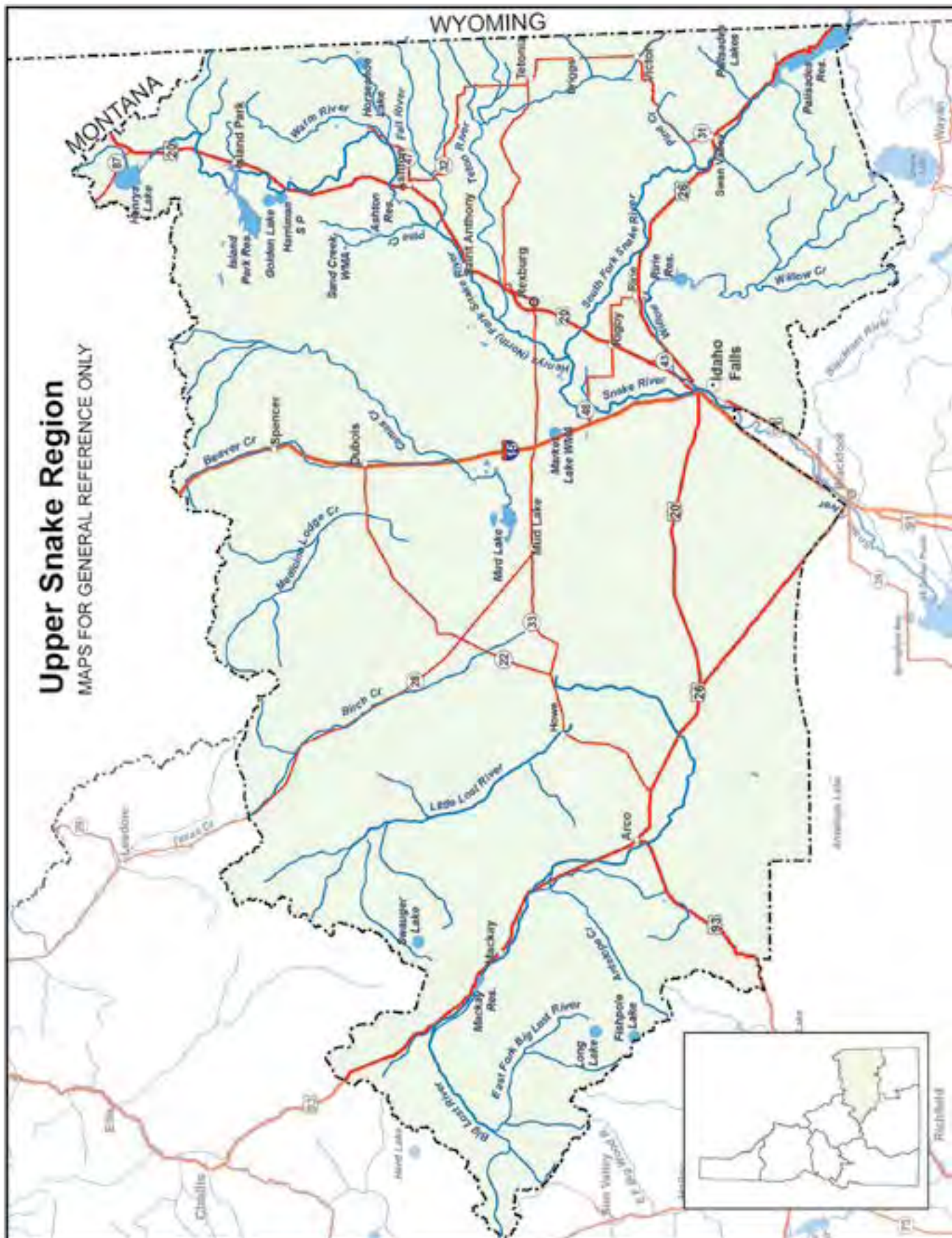
Then you need to apply for a Fishing Tournament permit.

Go to: <http://fishandgame.idaho.gov/public/licenses/fishTournament.pdf> for the application and information on fees.



Upper Snake Region

MAPS FOR GENERAL REFERENCE ONLY



Upper Snake Region

General Fishing Season for the Upper Snake Region

All Waters Open All Year

Except as modified in Upper Snake Region Special Rule Waters on Pages 37-38.

Fishing is not allowed within the posted upstream and downstream boundary of any fish weir or trap.

General Bag and Possession Limits for the Upper Snake Region

The following bag and possession limits apply to all waters of the Upper Snake Region except as modified in Upper Snake Region Special Rule Waters on Pages 37-38.

Bass (largemouth and smallmouth)

- Bass limit is 6, both species combined
- None under 12 inches

Brook Trout

- Brook trout limit is 25
- Harvest allowed during any open season unless otherwise noted under Special Rules – if gear or bait restrictions are listed, they must be followed when fishing for brook trout

Bull Trout

- Bull trout limit is 0, catch-and-release
- **No bull trout harvest is allowed**

Kokanee

- Kokanee limit is 6

Sturgeon

- Sturgeon limit is 0, catch-and-release
- Sturgeon must not be removed from the water and must be released upon landing
- Barbless hooks and sliding sinkers are required, see Page 56 for details

Tiger Muskie

- Tiger Muskie limit is 2, none under 40 inches

Trout includes brown trout, golden trout, lake trout, splake, Arctic grayling, cutthroat trout, rainbow trout, and trout hybrids

- Trout limit is 6, all species combined

Does not include bull trout and brook trout which are listed separately

Whitefish

- Whitefish limit is 25 – see Big Lost River exception
- Harvest allowed during any open season unless otherwise noted under Special Rules – if gear or bait restrictions are listed, they must be followed when fishing for whitefish

Protected Nongame Fish including leatherside chub and bluehead sucker

- May not be harvested or possessed

All Other Fish Species includes bullfrogs and crayfish

- No bag, size or possession limit

Check for potential fish consumption advisories. See Page 57.

Special Rule Waters for the Upper Snake Region (see Pages 37-38 for details)

Beaver Creek and tributaries
Becker Pond (Ryder Park Pond)
Big Lost River and tributaries
Burns Creek (see South Fork Snake River tributaries)
Dry Beds (Snake River)
Fall River and tributaries
Fish Creek (Harriman State Park)
Fishpole Lake (Custer County)
Fox Creek (see Teton River tributaries)
Golden Lake (Harriman State Park)
Hell Creek (see Willow Creek tributaries)
Henrys Fork (Snake River, North Fork)
Henrys Fork tributaries (excluding Thurmon Creek, Warm River and the Fall River)

Henrys Lake
Henrys Lake Outlet
Henrys Lake tributaries
Horseshoe Lake (Fremont County)
Lava Creek (see Willow Creek tributaries)
Little Lost River and tributaries
Long Lake (Custer County)
Market Lake Wildlife Management Area
McCoy Creek (see Palisades Reservoir tributaries)
Medicine Lodge Creek and tributaries
Mud Lake
Palisades Creek (see South Fork Snake River tributaries)
Palisades Lakes
Palisades Reservoir tributaries
Pine Creek (see South Fork Snake River tributaries)

Rainey Creek (see South Fork Snake River tributaries)
Ririe Reservoir
Sand Creek Wildlife Management Area
Sellars Creek (see Willow Creek tributaries)
Silver Lake (Harriman State Park)
Snake River
South Fork Snake River
South Fork Snake River tributaries
Swauger Lake (Custer County)
Teton Creek (see Teton River tributaries)
Teton River
Teton River tributaries
Thurmon Creek (Harriman State Park)
Trail Creek (see Teton River tributaries)
Warm River and tributaries
Willow Creek
Willow Creek tributaries

Special Rule Waters For the Upper Snake Region

See Page 36 for fishing seasons, bag and possession limits, and rules that apply to all waters within the Upper Snake Region except as listed below.

Beaver Creek and tributaries

- Trout limit is 6, no harvest of cutthroat trout

Becker Pond (Ryder Park Pond)

- Trout limit is 2

Big Lost River and tributaries

- December 1 through Friday before Memorial Day weekend – trout limit is 0, catch-and-release; whitefish limit is 0, catch-and-release
- Saturday of Memorial Day weekend through November 30 – trout limit is 6; whitefish limit is 0, catch-and-release

Dry Beds (Snake River)

Section: From the Highway 48 bridge upstream to the Great Feeder irrigation diversion headgate

- May 1 through March 31 – Upper Snake Region general rules apply
- April 1 through April 30 – it is legal to take fish with dip nets, by snagging or by hand – Upper Snake Region bag limits apply

Fall River and tributaries

- December 1 through Friday before Memorial Day weekend – trout limit is 0, catch-and-release
- Saturday of Memorial Day weekend through November 30 – trout limit is 2, no harvest of cutthroat trout

Fish Creek (Harriman State Park)

- Trout limit is 6, no harvest of cutthroat trout
- Fly-fishing only

Fishpole Lake (an alpine lake in Custer County)

- Trout limit is 2, none under 20 inches

Golden Lake (Harriman State Park)

- Closed to fishing

Henry's Fork (Snake River, North Fork)

Section: From Del Rio Bridge upstream to Vernon Bridge

- Trout limit is 2, none under 16 inches, no harvest of cutthroat trout

Section: From Vernon Bridge upstream to Ashton Dam

- December 1 through Friday before Memorial Day weekend – closed to fishing
- Saturday of Memorial Day weekend through November 30 – trout limit is 2, none under 16 inches, no harvest of cutthroat trout

Section: From Highway 20 bridge upstream to the posted boundary upstream of Riverside Campground

- Trout limit is 2, none under 16 inches, no harvest of cutthroat trout

Section: From the posted boundary upstream of the Riverside Campground upstream to the lower Harriman State Park boundary

- December 1 through Friday before Memorial Day weekend – closed to fishing
- Saturday of Memorial Day weekend through November 30 – trout limit is 0, catch-and-release, no bait allowed, barbless hooks required

Section: From the lower Harriman State Park boundary upstream to the upper Harriman State Park boundary (Harriman Ranch)

- December 1 through June 14 – closed to fishing
- June 15 through November 30 – trout limit is 0, catch-and-release, fly fishing only, barbless hooks required

Section: From the upper Harriman State Park boundary to Island Park Dam

- Trout limit is 0, catch-and-release
- No bait allowed, barbless hooks required

Section: From McCrea Bridge upstream to the Henry's Lake Outlet

- December 1 through Friday before Memorial Day weekend – trout limit is 0, catch-and-release
- Saturday of Memorial Day weekend through November 30 – trout limit is 6, only 2 may be cutthroat trout, no cutthroat trout under 16 inches

Section: From Henry's Lake Outlet upstream to the head of Big Springs

- Closed to fishing

All other sections of Henry's Fork including Ashton and Island Park Reservoirs – Upper Snake Region general rules apply

Henry's Fork tributaries (except Warm River, Fall River, and Thurmon Creek)

- December 1 through Friday before Memorial Day weekend – trout limit is 0, catch-and-release
- Saturday of Memorial Day weekend through November 30 – trout limit is 6, no harvest of cutthroat trout

Henry's Lake

Section: Those portions of the lake within the posted boundaries of Staley Springs and within 100 yards of Hatchery Creek

- Closed to fishing

Remainder of Henry's Lake

- January 2 through Friday before Memorial Day weekend – Closed to fishing
- Saturday of Memorial Day weekend through January 1 – trout limit is 2, brook trout must be counted in the trout limit
- Fishing may not continue after 2 trout have been reduced to possession

Henry's Lake Outlet

- December 1 through Friday before Memorial Day weekend – trout limit is 0, catch-and-release
- Saturday of Memorial Day weekend through November 30 – trout limit is 6, only 2 may be cutthroat trout, no cutthroat trout under 16 inches

Henry's Lake tributaries

- July 1 through March 31 – no harvest of cutthroat trout; brook trout limit is 25; only two brook trout over 16 inches
- April 1 through June 30 – closed to fishing
- Hatchery Creek – closed to fishing

Horseshoe Lake (Fremont County)

- No motors

Little Lost River and tributaries

- December 1 through Friday before Memorial Day weekend – trout limit is 0, catch-and-release
- Saturday of Memorial Day weekend through November 30 – trout limit is 2

Long Lake (an alpine lake in Custer County)

- Trout limit is 2, none under 20 inches

Market Lake Wildlife Management Area

- March 1 through July 15 – no boats, rafts or float tubes

Medicine Lodge Creek and tributaries

- December 1 through Friday before Memorial Day weekend, trout limit is 0, catch-and-release
- Saturday of Memorial Day weekend through November 30 – trout limit is 2, no harvest of cutthroat trout

Mud Lake (west of the posted boundary which runs north and south from McKenzie Point)

- March 1 through July 15 – no boats, rafts or float tubes

Palisades Lakes (alpine lakes in the Palisades Creek drainage)

- Trout limit is 2

Palisades Reservoir tributaries

- Trout limit is 6, no harvest of cutthroat trout

Ririe Reservoir

- Ice fishing is restricted to the area from the dam to the posted boundary about 1 mile upstream

Sand Creek Wildlife Management Area

- December 1 through Friday before Memorial Day weekend – closed to fishing
- Saturday of Memorial Day weekend through July 15 – no boats, rafts or float tubes
- Saturday of Memorial Day weekend through November 30 – motorized watercraft prohibited

Silver Lake (Harriman State Park)

- Closed to fishing

Snake River (From American Falls Reservoir upstream to the confluence of Henry's Fork (North) and South Fork)

- Trout limit is 6, only 2 may be cutthroat trout

South Fork Snake River

- No harvest of cutthroat trout
- Brown trout limit is 2, none under 16 inches
- No limit on rainbow trout or trout hybrid

South Fork Snake River tributaries

- No harvest of cutthroat trout
- Brown trout limit is 2, none under 16 inches
- No limit on rainbow trout or trout hybrid
- April 1 through June 30 – closed to fishing

Swauger Lake (an alpine lake in Custer County)

- Trout limit is 2, none under 20 inches

Teton River

- December 1 through Friday before Memorial Day weekend – trout limit is 0, catch-and-release
- Saturday of Memorial Day weekend through November 30 – trout limit is 6, no harvest of cutthroat trout

Teton River tributaries

- July 1 through March 31 – trout limit is 6, no harvest of cutthroat trout
- April 1 through June 30 – closed to fishing

Thurmon Creek (Harriman State Park)

- Closed to fishing

Warm River and tributaries

Section: Within the posted boundaries from Parker (Scheuller) Cabin near the mouth of Robinson Creek upstream to State Highway 47 bridge

- Closed to fishing

All other sections of the Warm River

- December 1 through Friday before Memorial Day weekend, trout limit is 0, catch-and-release
- Saturday of Memorial Day weekend through November 30 – trout limit is 6, no harvest of cutthroat trout

Willow Creek

- December 1 through Friday before Memorial Day weekend – trout limit is 0, catch-and-release
- Saturday of Memorial Day weekend through November 30 – trout limit is 6, no harvest of cutthroat trout

Willow Creek tributaries

- July 1 through March 31 – trout limit is 6, no harvest of cutthroat trout
- April 1 through June 30 – closed to fishing

SOUTH FORK SNAKE RIVER YELLOWSTONE CUTTHROAT TROUT FISHERY

Native Yellowstone cutthroat trout are highly valued by South Fork anglers for their aggressive nature and fast growth. Non-native rainbow trout not only compete with Yellowstone cutthroat trout, but they also interbreed with them, producing hybrids. Hybridization is a serious threat to the native cutthroat trout fishery. Idaho Fish and Game is attempting to minimize the level of hybridization in the South Fork by encouraging anglers to harvest rainbow trout, and by using traps to prevent rainbows from spawning in important cutthroat trout spawning tributaries. With your support, these efforts will help ensure this healthy Yellowstone cutthroat population and unique angling opportunity will be around for generations to come. So enjoy a shore lunch, or take some South Fork rainbow trout home for dinner – you'll be doing the fishery a favor!

Hybrid description: Cutthroat/rainbow trout hybrids display variable color and markings representing a range of shared characteristics from rainbow and cutthroat trout. All hybrids show spotting patterns similar to rainbow trout with spots more evenly distributed from head to tail and above and below the lateral line. **Yellowstone cutthroat/rainbow trout hybrids in the South Fork Snake River drainage are most easily identified by the presence of white fin tips.**

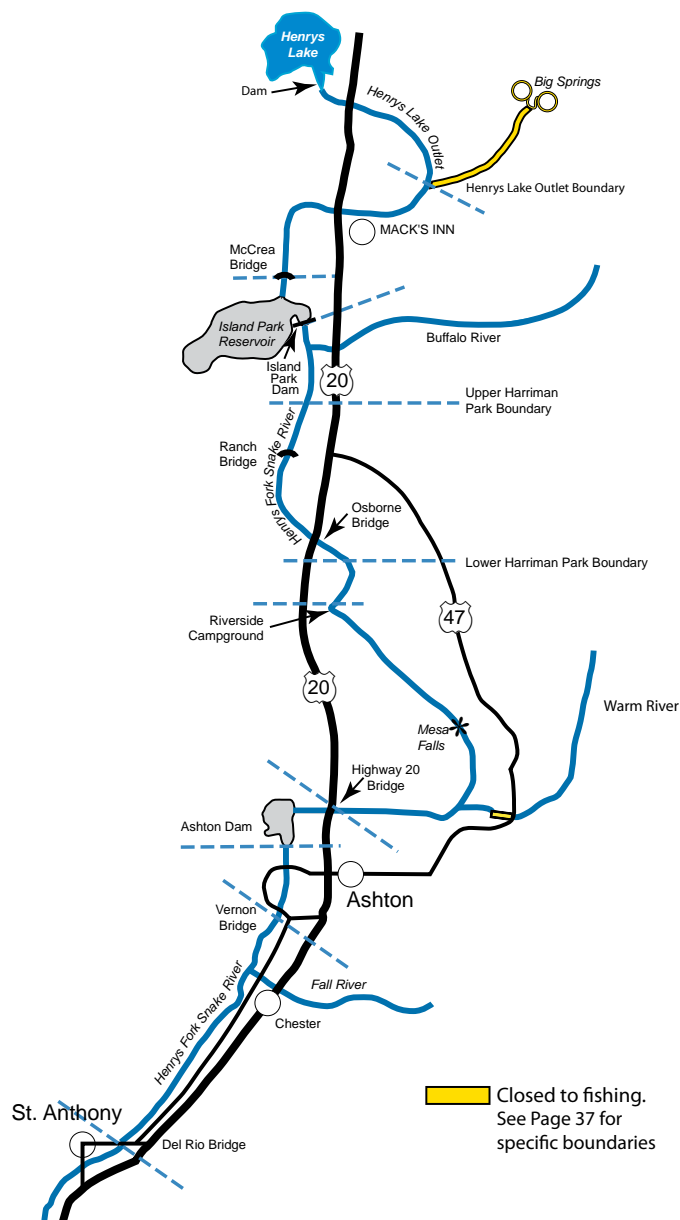


Henrys Fork

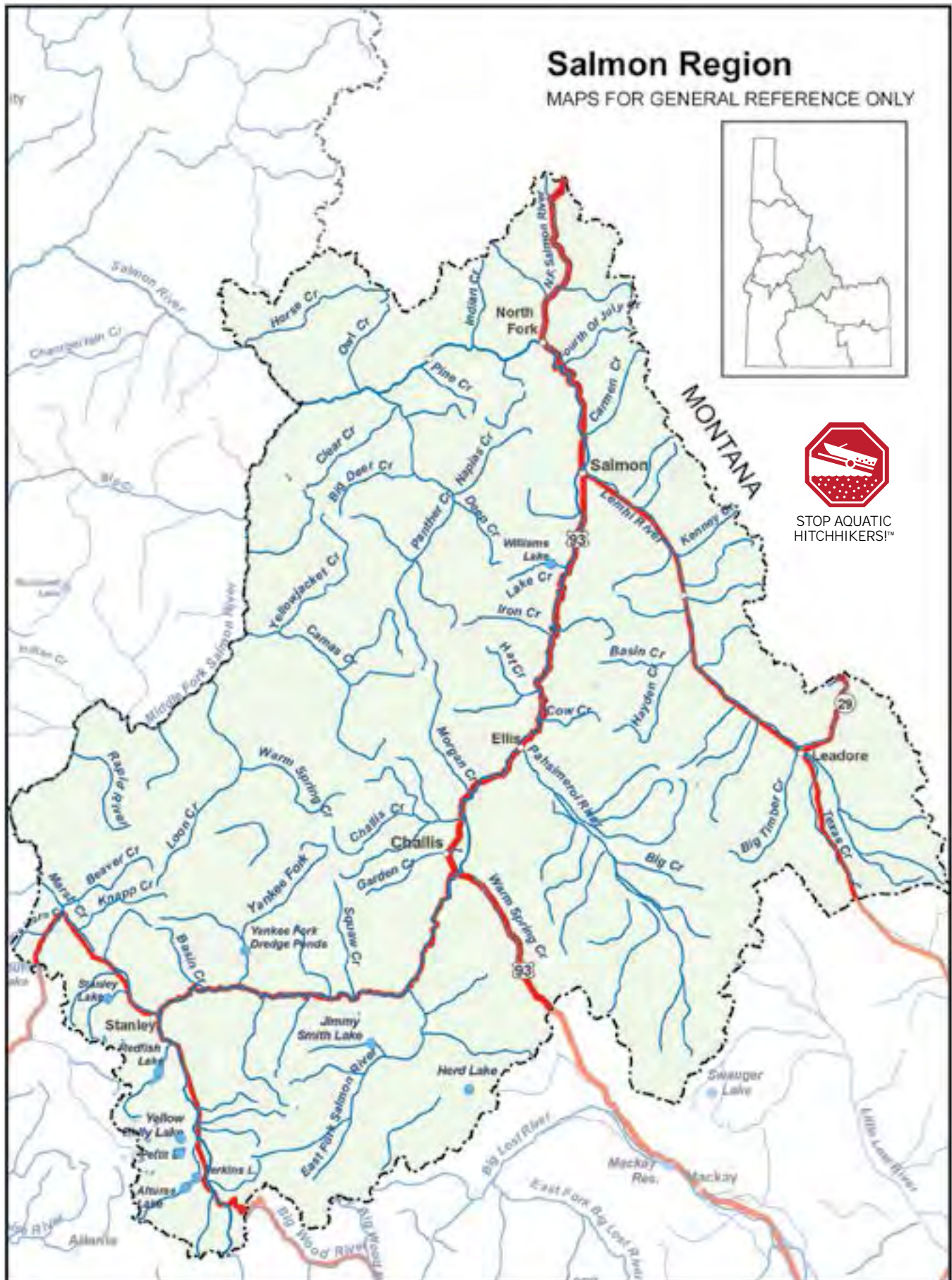
(Snake River, North Fork)

Fishing Guide

Map for general reference only.
See Page 37 for specific boundaries.



Upper Snake



STOP AQUATIC
HITCHHIKERS!™

Salmon Region

General Fishing Season for the Salmon Region

All Waters Open All Year

Except as modified in Salmon Region Special Rule Waters on Page 42.

Fishing is not allowed within the posted upstream and downstream boundary of any fish weir or trap.

General Bag and Possession Limits for the Salmon Region

The following bag and possession limits apply to all waters of the Salmon Region except as modified in Salmon Region Special Rule Waters on Page 42.

Bass (largemouth and smallmouth)

- Bass limit is 6, both species combined

Brook Trout

- Brook trout limit is 25
- Harvest allowed during any open season unless otherwise noted under Special Rules – if gear or bait restrictions are listed, they must be followed when fishing for brook trout

Bull Trout

- Bull trout limit is 0, catch-and-release
- **No bull trout harvest is allowed**

Kokanee

- Kokanee limit is 25

Salmon (ocean-going)

- Salmon seasons and limits are set annually by the Idaho Fish and Game Commission and rules are issued in a separate brochure
- Fishing for or targeting salmon is prohibited unless a salmon season is specifically opened for that water

Steelhead (ocean-going)

- Defined as rainbow trout longer than twenty (20) inches in length in the Salmon River drainage (excluding the Lemhi and Pahsimeroi rivers, and lakes)
- Fishing for or targeting steelhead is prohibited unless a steelhead season is specifically opened for that water (see pages 43-47)

Sturgeon

- Sturgeon limit is 0, catch-and-release
- Sturgeon must not be removed from the water and must be released upon landing
- Barbless hooks and sliding sinkers are required, see Page 56 for details

Tiger Muskie

- Tiger Muskie limit is 2, none under 40 inches

Trout includes lake trout, golden trout, Arctic grayling, cutthroat trout, rainbow trout, trout hybrids, and sunapee

- Trout limit is 6, all species combined

Does not include bull trout and brook trout which are listed separately

Whitefish

- Whitefish limit is 25
- Harvest allowed during any open season unless otherwise noted under Special Rules – if gear or bait restrictions are listed, they must be followed when fishing for whitefish

Protected Nongame Fish including Pacific lamprey

- May not be harvested or possessed

All Other Fish Species includes bullfrogs and crayfish

- No bag, size or possession limit

Check for potential fish consumption advisories. See Page 57.

Special Rule Waters for the Salmon Region (see Page 42 for details)

East Fork Salmon River, see Salmon River
East Fork
Herd Lake
Jimmy Smith Lake
Lake Creek and tributaries (Lemhi County)
Lemhi River
Middle Fork Salmon River see
Salmon River, Middle Fork

North Fork Salmon River see
Salmon River, North Fork
Pahsimeroi River
Redfish Lake
Salmon River
Salmon River tributaries
Salmon River, East Fork
Salmon River, Middle Fork and
tributaries

Salmon River, North Fork
Salmon River, Yankee Fork and
West Fork Yankee Fork
Yankee Fork Salmon River
Dredge Ponds
Yankee Fork Salmon River see
Salmon River, Yankee Fork

Special Rule Waters For the Salmon Region

See Page 41 for fishing seasons, bag and possession limits, and rules that apply to all waters within the Salmon Region except as listed below.

East Fork Salmon River (see Salmon River, East Fork)

Herd Lake

- Trout limit is 25

Jimmy Smith Lake

- Trout limit is 25

Lake Creek and tributaries (above Williams Lake)

- December 1 through June 30 - closed to fishing upstream from the posted boundary at Williams Lake
- July 1 through November 30 - Salmon Region general rules apply

Lemhi River

- December 1 through Friday before Memorial Day weekend - trout limit is 0, catch-and-release
- Saturday of Memorial Day weekend through November 30 - trout limit is 6, no harvest of cutthroat trout, no trout under 14 inches

Lemhi River tributaries

- Salmon Region general rules apply

Middle Fork Salmon River (see Salmon River, Middle Fork and tributaries)

North Fork Salmon River (see Salmon River, North Fork)

Pahsimeroi River

- December 1 through Friday before Memorial Day weekend - trout limit is 0, catch-and-release
- Saturday of Memorial Day weekend through November 30 - trout limit is 6, no harvest of cutthroat trout, no trout under 14 inches

Pahsimeroi River tributaries

- Salmon Region general rules apply

Redfish Lake

- January 1 through August 7 - Salmon Region general rules apply
- August 8 through December 31 - kokanee limit is 0, catch-and-release

Salmon River

- Trout limit is 6; only trout with a clipped adipose fin, as evidenced by a healed scar, may be kept

Salmon River tributaries

Section: Those tributaries from the mouth of the Salmon River upstream to the mouth of the Middle Fork Salmon River (except Crooked Creek, Little Salmon River, and South Fork Salmon River)

- Trout limit is 2

Section: Those tributaries from the mouth of the Middle Fork Salmon River upstream (except: North Fork Salmon River, Lemhi, Pahsimeroi, East Fork Salmon River, and Yankee Fork Salmon River)

- December 1 through Friday before Memorial Day weekend – trout limit is 0, catch-and-release
- Saturday of Memorial Day weekend through November 30 - Salmon Region general rules apply

Salmon River, East Fork

- December 1 through Friday before Memorial Day weekend – trout limit is 0, catch-and-release
- Saturday of Memorial Day weekend through November 30 – trout limit is 6, no harvest of cutthroat trout

Salmon River, East Fork tributaries

- Salmon Region general rules apply

Salmon River, Middle Fork and tributaries (includes: Bear Valley, Big, Camas, Elk, Loon, Marsh, and Sulphur creeks)

- Trout limit is 0, catch-and-release
- No bait allowed, barbless hooks required

Salmon River, North Fork

- December 1 through Friday before Memorial Day weekend – trout limit is 0, catch-and-release
- Saturday of Memorial Day weekend through November 30 – trout limit is 6, no harvest of cutthroat trout

Salmon River, North Fork tributaries

- Salmon Region general rules apply

Salmon River, Yankee Fork and West Fork Yankee Fork

- December 1 through Friday before Memorial Day weekend - trout limit is 0, catch-and-release
- Saturday of Memorial Day weekend through November 30 – trout limit is 6, no harvest of cutthroat trout

Salmon River, Yankee Fork tributaries

- Salmon Region general rules apply

Yankee Fork Salmon River Dredge Ponds

- December 1 through Friday before Memorial Day weekend - closed to fishing
- Saturday of Memorial Day weekend through November 30 - Salmon Region general rules apply

Yankee Fork Salmon River (see Salmon River, Yankee Fork)

Idaho Steelhead Seasons, Rules and Information

Steelhead are rainbow trout longer than 20 inches in length in the Snake River drainage below Hells Canyon Dam, the Salmon River drainage (excluding lakes and the Pahsimeroi and Lemhi rivers), and the Clearwater River drainage (excluding that portion above Dworshak Dam and lakes). Rainbow trout longer than 20 inches in length with the adipose fin clipped, as evidenced by a healed scar, are defined as steelhead in the Snake River from Hells Canyon Dam upstream to Oxbow Dam and in the Boise River from its mouth upstream to Barber Dam, during steelhead seasons.

Only steelhead with a clipped adipose fin (see Page 47), as evidenced by a healed scar, may be kept. These are hatchery fish that had their adipose fin removed as juveniles. All naturally produced steelhead with an intact adipose fin must be released because they are listed as “Threatened” under the Endangered Species Act (see Page 48). Some hatchery steelhead are not adipose fin clipped and must also be released.

Licenses – Steelhead Permits

Resident Fishing License	\$25.75
Nonresident Fishing License	\$98.25
Junior Resident License (14 – 17 years)	\$13.75
Junior Nonresident Fishing License	\$21.75
Resident Steelhead Permit (Full Season Fishing License Required)	\$12.75
Nonresident Steelhead Permit (Full Season Fishing License Required)	\$25.75
Nonresident Salmon or Steelhead 3-day License/Permit	\$37.50

(Prices are accurate for January 1, 2013
but are subject to change by Legislative action.)

Anyone fishing for steelhead, except those expressly exempt, must have a valid fishing license and steelhead permit on his/her person to fish for, reduce to possession, or catch-and-release steelhead.

Any person who does not qualify as a resident (see Page 63) must purchase either a nonresident season fishing license and a full-season steelhead permit or a nonresident 3-day salmon/steelhead license/permit.

Children (including nonresident children) under the age of 14 are exempt from purchasing steelhead permits. They may fish without permits if they are accompanied by a valid permit holder, provided that any fish caught must be recorded on the permit holder’s card and counted in the permit holder’s legal bag, possession and season limit. A resident child under 14 may purchase a permit without a license so that they may catch their own limit of steelhead.

Any non-resident under the age of 18 may purchase a junior non-resident fishing license and permit so they may catch their own limit of steelhead.

When excess hatchery steelhead become available at fish hatcheries or trap facilities, they may be released in the

S Snake River between Hells Canyon and Oxbow dams, and in the Boise River to provide additional fishing opportunity. A steelhead permit is required when fishing for hatchery steelhead stocked by Idaho Fish and Game in these waters.

Methods of Take

- Only single-pointed barbless hooks are allowed when fishing for steelhead in the South Fork Clearwater River.
- No person shall kill or retain in possession any steelhead which has been hooked other than in the mouth or jaw. Any steelhead hooked other than in the mouth or jaw must be released. See snagging definition on Page 51.
- Only barbless hooks with a maximum 5/8 inch gap between shank and point may be used when fishing for steelhead in the Salmon and Clearwater river drainages and the Snake River below Hells Canyon Dam. Bending the barb(s) down to the shank of a single, double, or treble hook will meet this requirement.
- Steelhead may be taken with barbed hooks in the Boise River and the Snake River between Hells Canyon and Oxbow dams.
- Any angler, who has attained the bag, possession, or season limit on those waters with steelhead limits, must cease fishing for steelhead including catch-and-release fishing.

Please Note

- Fishing for or targeting steelhead is prohibited unless a steelhead season is specifically opened for that water.
- Steelhead with a clipped adipose fin, as evidenced by a healed scar, must be killed immediately if being reduced to possession. Otherwise, the steelhead must be released upon landing.
- All fish that are hooked, landed, and reduced to possession shall be counted in the limit of the person hooking the fish.
- Steelhead with an intact adipose fin cannot be reduced to possession and must be released.
- No person shall have in the field or in transit any steelhead from which the head or tail has been removed unless: 1) the angler is ashore and done fishing for the day; 2) the adult steelhead is properly recorded on the anglers steelhead permit; and 3) the fish is processed or packaged with the skin naturally attached to the flesh including a portion with a healed, clipped adipose fin scar. The fish must be processed or packaged in a manner that the number of fish harvested can be readily determined. Processed steelhead cannot be transported by boat.
- Steelhead harvest and angler participation are estimated by a telephone survey conducted within a few weeks after the season closes. You may be called and asked about your effort and success.

Please save your permit until three months after the season has closed or until you are contacted by Idaho Fish and Game.

River Location Codes

Snake River

Snake River, downstream from Salmon River.....	01
Snake River, from Salmon River to Hells Canyon Dam	02
Snake River, Hells Canyon Dam to Oxbow Dam.....	27

Clearwater River

Clearwater River, downstream from Orofino Bridge.....	03
Clearwater River, upstream from Orofino Bridge.....	04
North Fork Clearwater River	05
South Fork Clearwater River	07

Salmon River

Salmon River, downstream from Whitebird Creek.....	10
Salmon River, Whitebird Creek to Little Salmon.....	11
Salmon River, Little Salmon to Vinegar Creek	12
Salmon River, Vinegar Creek to South Fork	13
Salmon River, South Fork to Middle Fork	14
Salmon River, Middle Fork to North Fork	15
Salmon River, North Fork to Lemhi River	16
Salmon River, Lemhi River to Pahsimeroi River	17
Salmon River, Pahsimeroi River to East Fork.....	18
Salmon River, upstream from the East Fork.....	19

Other

Little Salmon River.....	20
Boise River.....	28



© Joseph Tomelleri

Legend

Solid and dashed blue lines have the same definitions; they are just alternated to show different location code sections of the rivers.

- Coded steelhead fishing areas
- - - Closed to the harvest of steelhead or does not contain steelhead.

Steelhead Seasons and Limits

River Section	Spring Season 20 fish per season						Fall Season 20 fish per season					
	Jan	Feb	Mar	Apr	May	Jun	Jul	Aug	Sep	Oct	Nov	Dec
Clearwater River from its mouth upstream to the Memorial Bridge of U.S. Highway 12 at Lewiston.	Jan 1 - Apr 30 3 per day, 9 in possession				Closed to steelhead fishing		Jul 1 - 31 Catch-and-Release	Aug 1 - Dec 31 2 per day, 6 in possession				
Clearwater River: Mainstem and Middle Fork Clearwater River from the Memorial Bridge of U.S. Highway 12 at Lewiston upstream to Clear Creek.	Jan 1 - Apr 30 3 per day, 9 in possession				Closed to steelhead fishing		Jul 1 - Oct 14 Catch-and-Release			Oct 15 - Dec 31 2 per day, 6 in possession		
Closures: Fishing is prohibited between posted boundaries about 100 yards upstream and downstream from the Nez Perce Tribal Hatchery Ladder and extending into the river channel about 50 yards. Fishing from the shoreline or wading along the perimeter of Dworshak National Fish Hatchery is prohibited . Fishing from motorized watercraft is prohibited from the Clearwater River Bridge at Orofino upstream to the confluence of the Selway and Lochsa rivers from Sep 1 - Apr 30. (Note: Fishing for steelhead is not allowed upstream of Clear Creek).												
North Fork Clearwater River from its mouth upstream to Dworshak Dam.	Jan 1 - Apr 30 3 per day, 9 in possession				Closed to steelhead fishing		Jul 1 - Oct 14 Catch-and-Release			Oct 15 - Dec 31 2 per day, 6 in possession		
Closures: Fishing from the shoreline or wading along the perimeter of Dworshak National Fish Hatchery is prohibited . Fishing from any watercraft or wading is prohibited between the posted line about 150 yards upstream from the mouth of the North Fork Clearwater River and the Ahsahka Highway 7 Bridge. When fishing from the Ahsahka Highway 7 Bridge, it is illegal to take any fish downstream of the railroad bridge. Fishing from the railroad bridge is prohibited .												
South Fork Clearwater River from its mouth upstream to the confluence of American and Red rivers.	Jan 1 - Apr 30 3 per day, 9 in possession.				Closed to steelhead fishing		Jul 1 - Oct 14 Catch-and-Release.			Oct 15 - Dec 31 2 per day, 6 in possession.		
Note: Only single-pointed barbless hooks are allowed when fishing for steelhead or salmon												
Salmon River from its mouth upstream to the Lake Creek Bridge (about 6 miles upstream from the mouth of the Little Salmon River).	Jan 1 - Apr 30 3 per day, 9 in possession				Closed to steelhead fishing		Aug 1 - Aug 31 Catch-and-Release	Sep 1 - Dec 31 3 per day, 9 in possession				
Salmon River from the Lake Creek Bridge to Long Tom Creek (3/4 mile upstream from the Middle Fork Salmon River).	Jan 1 - Mar 31 3 per day, 9 in possession		Closed to steelhead fishing									
Salmon River from Long Tom Creek (3/4 mile upstream from the Middle Fork Salmon River) to posted boundary 100 yards downstream of Sawtooth Hatchery.	Jan 1 - Apr 30 3 per day, 9 in possession				Closed to steelhead fishing							

Steelhead Seasons and Limits

River Section	Spring Season 20 fish per season						Fall Season 20 fish per season					
	Jan	Feb	Mar	Apr	May	Jun	Jul	Aug	Sep	Oct	Nov	Dec
Little Salmon River from its mouth upstream to the U.S. Highway 95 bridge near Smokey Boulder road.	Jan 1 - May 15 3 per day, 9 in possession					Closed to steelhead fishing		Aug 1 - Aug 31 Catch-and-Release	Sep 1 - Dec 31 3 per day, 9 in possession			
Snake River from the Washington State line at the confluence of the Snake and Clearwater Rivers upstream to Hells Canyon Dam.	Jan 1 - Apr 30 3 per day, 9 in possession				Closed to steelhead fishing							
Snake River from Hells Canyon Dam to Oxbow Dam, and Boise River from its mouth upstream to Barber Dam.	Jan 1 - May 31 3 per day, 9 in possession					Not present		Sep 1 - Dec 31 3 per day, 9 in possession				
Adult steelhead are only present in the Boise River and the Snake River above Hells Canyon Dam when stocked by Idaho Fish and Game. Check with regional offices to determine if steelhead have been released that year. A steelhead permit is required to fish for and keep steelhead (rainbow trout longer than 20 inches with a clipped adipose fin). Limits are 3 per day and 9 in possession when steelhead are present. Barbless hooks are not required.												

When and Where You Can Expect to See Listed/Protected Salmon and Steelhead in Idaho

Sockeye	Spring & Summer Chinook	Fall Chinook	Steelhead
<i>July - September</i>	<i>April - September</i>	<i>August-December</i>	<i>July-May</i>
• Snake River below Hells Canyon Dam	• Snake River below Hells Canyon Dam	• Snake River below Hells Canyon Dam	• Snake River below Hells Canyon Dam
• Salmon River	• Salmon River & tributaries	• Clearwater River	• Clearwater River
• Redfish Lake and Creek		• Lower Salmon River	• Salmon River
• Alturas Lake and Creek			• Tributary streams to these rivers
• Pettit Lake and Creek			



**Preserve Our Hunting, Fishing
and Wildlife Heritage!
Become a Member Today!**

Visit www.ifwf.org or call 208 287-2805

Steelhead Fishing in Boundary Waters

Snake River between Idaho, Oregon, or Washington: The holder of a valid Idaho fishing license and steelhead permit may fish for steelhead in the Snake River where it forms the boundary between the states of Idaho and Oregon or Washington, subject to the fish and game laws of Idaho, but may not fish from the shoreline, including wading, and may not fish in sloughs or tributaries on the Oregon or Washington side. Any Oregon or Washington license holder has the same rights and restrictions with reference to the Idaho side. Any angler who fishes on the Snake River or any other water forming an Idaho boundary is entitled to have in possession only the limit allowed by one license regardless of the number of licenses in possession.

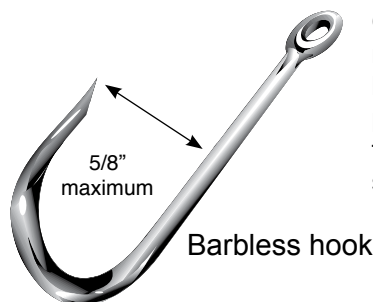
Permit Validation

When an adult steelhead has been hooked, landed, and reduced to possession (must be killed immediately), the angler hooking the fish must immediately:

1. Completely remove one numbered notch from the permit.
2. Look up the number code from the River Location Code List and write it in the space provided.
3. Enter the month and day the fish was caught.

However, when a steelhead is released rather than reduced to possession, the angler is not required to make an entry on the permit.

A proxy statement is required if a steelhead is reduced to your possession, then gifted to or transported by another individual or party. Please see Page 48.



Only barbless hooks with a maximum of 5/8 inch gap between the shank and point may be used when fishing for steelhead and salmon

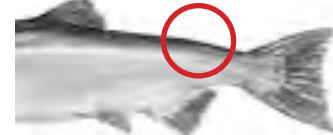
Unclipped Adipose Fin

Wild or hatchery steelhead or salmon with an unclipped adipose fin **must** be released

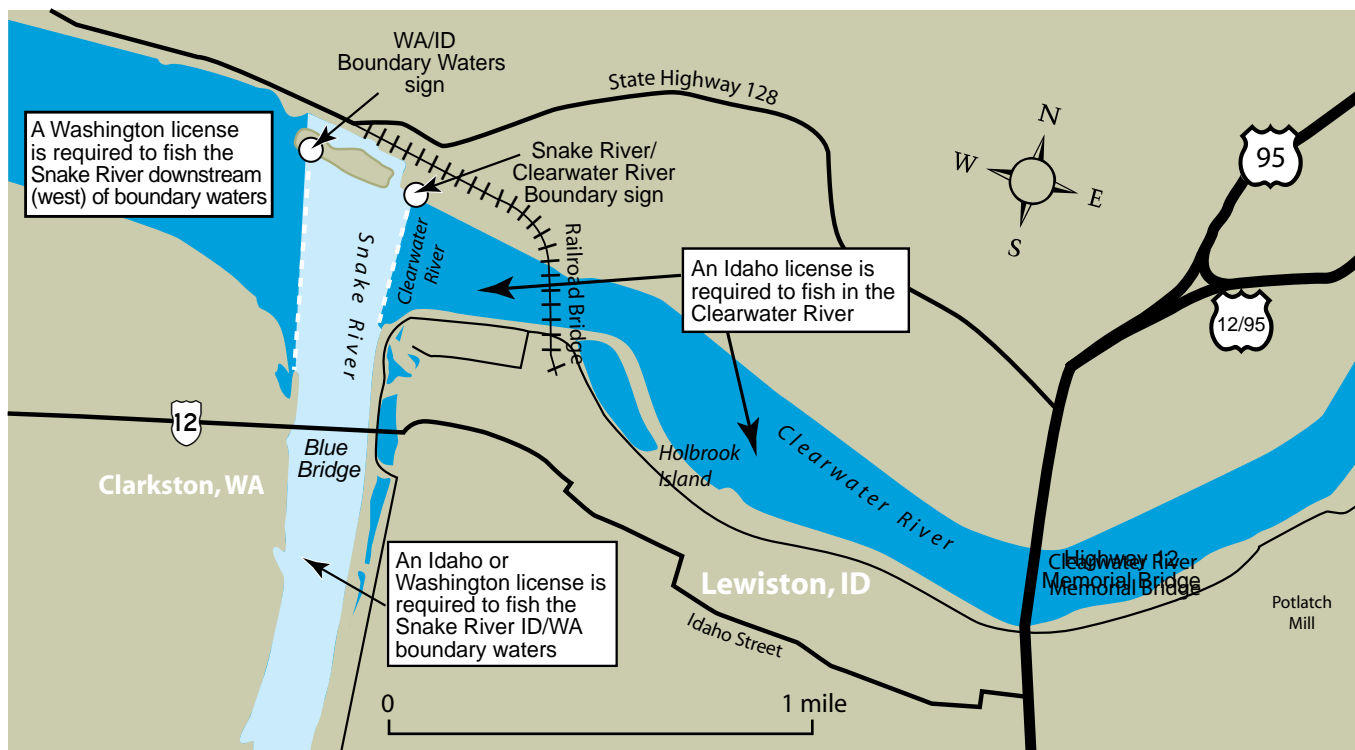


Clipped Adipose Fin

Hatchery steelhead or salmon may be kept if the adipose fin has been clipped



Washington/Idaho Fishing Waters Boundaries



Threatened and Endangered Species

Several of Idaho's fish species have been listed or have been petitioned for listing under the 1973 federal Endangered Species Act (ESA). Species are listed when population levels drop so low that they are at a high risk of extinction. Species already listed under the ESA as either "Threatened" or "Endangered" are protected from any form of "take." While over-harvest has been a factor for some resident species, for the most part, these fish are in trouble because their habitat has been damaged or destroyed. Idaho Fish and Game encourages land and water management agencies to make decisions that will benefit fish and wildlife. However, the Idaho Fish and Game Commission's authority is restricted to either regulating harvest or stocking fish, so these are the only tools Idaho Fish and Game has to restore depleted populations or, in some cases, preserve future options.

Anadromous Salmon and Steelhead

Nearly all of Idaho's naturally-produced anadromous (ocean-going) salmon and steelhead are listed as "Threatened" or "Endangered" under the ESA. Naturally produced spring/summer and fall Chinook salmon and steelhead are listed as "Threatened." Sockeye salmon produced in Alturas, Pettit, and Redfish lakes in the Stanley Basin are listed as "Endangered." They are protected to prevent further declines in abundance. Snake River coho salmon were declared extinct in the mid-1980s but coho salmon have since been reintroduced into the Clearwater River. Neither natural spring/summer Chinook salmon nor reintroduced coho salmon in the Clearwater drainage are listed under the federal ESA, but are protected by state law.

Angler Be Aware!

Idaho steelhead harvest is restricted to only steelhead with a clipped adipose fin (ad-clipped) to help maximize harvest opportunity for hatchery produced fish without causing unacceptable loss of naturally produced steelhead. This approach, began in 1987, has allowed anglers to keep an annual average of 64,000 hatchery steelhead for the last 10 years. This approach is also used for hatchery Chinook salmon. Fin clipping allows anglers to differentiate between hatchery produced and wild salmon. This tool allows limited angling opportunity for hatchery Chinook salmon in Idaho while protecting naturally produced fish. Idaho has not had a fishery for wild Chinook salmon since 1978.

You may encounter "Threatened" and "Endangered" salmon and steelhead in Idaho's anadromous waters. Avoid fishing or boating in riffle areas where salmon and steelhead are seen or are likely to spawn. Carefully and quickly release any wild anadromous salmon or wild steelhead. Please help preserve "Threatened" and "Endangered" salmon and steelhead and also preserve your privilege to fish for other fish in waters used by federally protected anadromous salmon and steelhead.

Know the Difference

Refer to the illustrations on Page 60 to make sure you can distinguish between a small salmon (which may not be harvested) and a juvenile rainbow trout. Small sockeye will be bright silver when found in the Salmon River in the spring or early summer and must be released immediately. Because of their similarity to resident rainbow trout, most streams with populations of wild, juvenile steelhead have special rules to protect them, such as catch-and-release rules in the Middle Fork of the Salmon River drainage.

PROXY STATEMENT (To transport fish taken by another person)

Angler's Name _____ Signature _____

Address _____ Phone _____

License No. _____ Tag No. _____ Permit No. _____

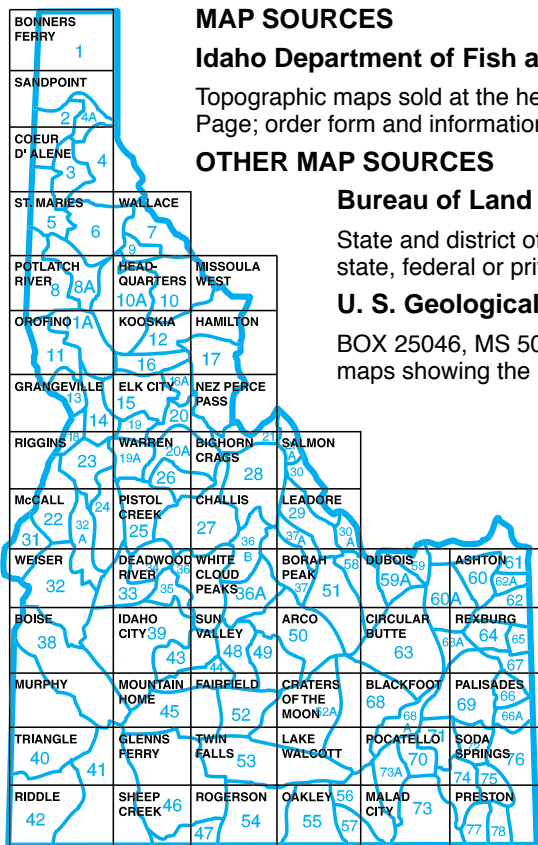
Name of person transporting _____ Phone _____

Fish Species	Description and Number Taken	Water Caught	Date

GAME:

Species _____ How many _____

Species _____ How many _____



MAP SOURCES

Idaho Department of Fish and Game

Topographic maps sold at the headquarters office in Boise and some regional offices. See map grid, this Page; order form and information below.

OTHER MAP SOURCES

Bureau of Land Management

State and district offices. These maps cover all land statewide and show land ownership as state, federal or private. Idaho BLM map orders call: 208-373-4007.

U. S. Geological Survey

BOX 25046, MS 504, Denver Federal Center, Denver, CO 80225. Topographical quadrangle maps showing the relief of terrain. USGS map orders call: 303-202-4700

U.S. Forest Service

All forest supervisor and ranger district offices. Travel plan maps of each forest include all drainages, roads and road closures. Idaho National Forest map orders call: 208-373-4007.

HOW TO ORDER MAPS FOR YOUR HUNT UNIT (SAMPLE FOR UNIT 23)

Qty.	Maps (list maps by name)	Price each	Amount
1	Riggins	8.35	\$ 8.35
1	Warren	8.35	\$ 8.35
1	McCall	8.35	\$ 8.35
	Map Postage		\$ 2.50
TOTAL			\$27.55

Map Orders

Idaho Department of Fish and Game
P.O. Box 25, Boise, ID 83707
(208) 334-3700

All orders must be prepaid. Allow 4 weeks for processing.

Ship to: _____

Address: _____

City: _____ State: _____ Zip Code: _____

Daytime Phone Number _____

Visa/Mastercard Card #: _____ Expiration Date: _____

Cardholder's Name (if different than above) _____

Map Name (All items include Idaho sales tax)		Unit Price	Qty.	Amount
Idaho Atlas and Gazetteer	\$19.95			
Maps (List map names)	Each \$8.35			
Idaho Wild 100 Game Cookbook	\$10.00			
Mail Separately! Do not include with any license/tag order.		Postage per order \$2.50		
Credit Card, check or money order, OK		Total		

TOPOGRAPHIC MAP, The \$8.35 price for each 1:100,000 sheet includes Idaho sales tax. All sheet maps will be folded and mailed flat unless you indicate otherwise. To have full coverage of most hunt units, more than one map may be required.

The **IDAHO ATLAS AND GAZETTEER**, a copyright product of DeLorme Maps, has 1:250,000 topographical maps of the state, lists of campground, access areas, boat docks, parks and other facilities. It is sold at the manufacturer's suggested price plus Idaho sales tax, for a total of \$19.95. Using the Atlas along with the more detailed single-sheet maps for the area of specific interest gives the visiting hunter or angler an excellent reference for the entire state, as well as fine detail in the immediate area of your planned camp or other location.

General Fishing Information

Look for our fishing trailers at popular waters near you! See the trailer schedule at <http://fishandgame.idaho.gov>

Do You Need to Know Where to Take the Family Fishing?

In response to anglers requesting more family-oriented fishing opportunities and simplified rules, Fish and Game has identified waters that have basic rules and bag limits and provide a high likelihood that inexperienced anglers will catch a fish.

Each region has a Family Fishing Water Guide that you can find at our website or any of our Regional Offices. These pamphlets give you directions to local "Family Fishing Waters," list the types of fish you could catch, access locations, and provide tips on fishing techniques to make your outing successful.

Below are several terms, rules, and definitions used in this booklet. Please consult the Idaho Administrative Procedures Act webpage or Title 36 of the Idaho Code for more detail at <http://adminrules.idaho.gov/rules/current/13/index.html>.

Methods of Fishing and Equipment

Archery and Spear Fishing: Fishing with a bow and arrow, crossbow, spear or mechanical device, excluding firearms. This type of fishing is permitted only in the taking of bullfrogs and unprotected nongame fish and only in those waters during the season set for the taking of game fish.

Artificial Fly: Any fly made entirely of rubber, wood, metal, glass, feather, fiber or plastic by the method known as fly tying.

Artificial Lure: Any device made entirely of rubber, wood, metal, glass, feather, fiber, or plastic with hook or hooks attached. Bait of any kind may not be used with artificial lures when fishing artificial flies and lures-only waters.

Attendance of Fishing Gear: You must attend to your fishing gear while fishing. This means being able to watch your rod at all times and be able to react to a potential strike.

Bait: Organic substances, other than rubber, wood feather, fiber, or plastic, attached to a hook to attract fish. Bait includes insects, insect larvae, worms, dead fish, fish parts, any other animal or vegetable matter, or scented synthetic materials.

Note: Use of live fish, leeches, frogs, salamanders, waterdogs or shrimp as bait is prohibited in Idaho, except that live crayfish may be used if caught on the body of water being fished.

Bait Fishing: Fishing with any organic substance defined as "bait."

Barbless Hook: A fish hook without barbs or on which barbs have been bent completely closed (point of barbed area touches the body of the hook).

Catch-and-Release Fishing: Effort, by permitted methods, to catch or attempt to catch a fish or species of fish is legal, with the restriction that any fish or species of fish so caught must be released immediately, unharmed back to the water. Catch-and-release fishing is only allowed when a fishing season is open for that particular fish species. No released fish can be marked by any means including tags, fin clips, or injuring with an intent to leave a scar. **Note:** Species of fish not specifically listed as catch-and-release may be harvested under their appropriate limits.

Chumming: The use of any substance not attached to a hook that is intended to attract fish. It is illegal to chum while fishing in Idaho.

Closed to Fishing: No fishing of any type is allowed in the water body.

Contest/Tournament Fishing: An organized event based on the capture of individual fish where there is: a) a live fish weigh-in; or b) awards cash or prizes valued at \$1,000 or more based on number, size or species of fish captured; or c) is expected to draw 20 or more anglers. Contests for participants under the age of 14 are exempt. Any person, organization, club, business, partnership, corporation or other entity that sponsors a fishing contest must first obtain a fishing contest permit from IDFG. No harvest tournaments on native fish will be allowed. Applications can be obtained at any IDFG Office or from our website. Allow a minimum of 30 days for processing.

Disturbing Traps or Fishing Gear Belonging to Others: It is illegal to destroy, disturb, or remove any traps belonging to others.

Electric Motor Only: When fishing waters listed "electric motors only," gas (internal combustion) motors may be attached to the boat; but use of the gas motor is prohibited

Fishing: Any effort made to take, kill, injure, capture, or catch any fish, crayfish, or bullfrog. All fishing in Idaho requires a valid fishing license except fishing in a private pond where the owner has a valid Private Pond Permit from Fish and Game.

Fishing Gear: It is illegal to fish in any waters of Idaho with more than one handline or pole with a line attached; or with two poles or lines without a two-pole permit; or with more than five poles or lines while ice fishing; or by archery, spearfishing, snagging, hands, and netting except as permitted. Not more than five hooks may be attached per line. The line or lines must be attended by the person fishing.

Fishing License: You must have in your possession a valid fishing license to fish in Idaho. You must produce your license or fish upon request of an agent of the Idaho Department of Fish and Game.

Fishing Shelter: Any enclosure or shelter used for fishing. If left unattended overnight on the ice of any water statewide, it shall have the owners' name, telephone number, and current address legibly marked on two opposing sides of the enclosure or shelter.

Fly-Fishing: Fishing with a fly rod, fly reel, fly line, and artificial flies.

Float Tube: A floating device which suspends a single occupant, from the seat down, in the water, and is not propelled by oars, paddles or motor.

Gaff Hook: A pointed device designed to pierce a fish for the purpose of reducing the fish to possession. It is illegal to land fish of any species with a gaff hook except through a hole cut or broken in the ice in waters which have no length restrictions or harvest closures for that species or when landing non-game fish taken with archery equipment.

Hands, Use of for Fishing: The only fish you can legally catch and harvest using your hands are crayfish and bullfrogs. You must use fishing gear to harvest all other fish species.

Hook: A bent wire device, for the catching of fish, to which one, two, or three points may be attached to a single shank. Up to five (5) hooks per line may be used, except where specifically prohibited. When fishing for salmon or steelhead, the gap between the point and shank cannot be greater than 5/8 inch. A **single-pointed hook** has one shank and one point.

Ice Fishing: Fishing through an opening, broken or cut, through the ice. You may fish with a maximum of five (5) lines per angler. The opening in the ice may not exceed 10 inches in diameter except on Bear Lake while fishing for cisco. **Note:** two-pole permits do not entitle the angler to exceed the five pole limit for ice fishing.

Illegal Fishing Methods: No chemicals, poisons, electric current, or explosives may be used to attempt catching or destroying fish.

Maggot: An unhatched fly larva.

Molesting Fish: It is illegal to molest any fish by shooting at it with a firearm or pellet gun, striking at it with a club, hands, rocks, or other objects, building obstructions for catching fish, or chasing fish up or downstream in any manner.

Motor: Includes electric and internal combustion motors.

No Motor: Fishing from a water craft with a motor attached is prohibited.

Sliding Sinker: A method of attaching a sinker to a device that slides freely on the main line. The line used to attach the sinker to the sliding device must be of lower breaking strength than the main line. Required for sturgeon fishing.

Snagging: Taking or attempting to take a fish by use of a hook or lure in any manner or method other than enticing or attracting a fish to strike with, and become hooked in, its mouth or jaw. Game fish cannot be harvested unless hooked in the mouth or jaw. Snag fishing is illegal except where allowed by special rule. Snagging of unprotected nongame fish species is permitted.

Trapping or Seining Minnows and Crayfish: Nongame fish (minnows), yellow perch, and crayfish may be taken only in waters open to fishing; provided the seine or net does not exceed ten (10) feet in length or width, and nets and seines must have three-eighths (3/8) inch square or smaller mesh; and the minnow or crayfish trap does not exceed two (2) feet in length, width or height. If the trap is of irregular dimension, but its volume does not exceed the volume of an eight (8) cubic foot trap, it is also legal to use. Nets and seines may not be left unattended. Traps must be checked at least every forty-eight (48) hours. All traps must have a tag attached bearing the owner's name and address.

All game fish (except yellow perch) and protected nongame fish incidentally taken while trapping or seining must be immediately released alive. All fish so taken must immediately be killed except where stated otherwise. Crayfish may be kept alive to be used as bait only on the water where captured. Nongame fish and crayfish may only be taken during the season set for the taking of game fish in those waters.

Only five (5) crayfish traps can be fished with a valid fishing license. If more than five traps are used at one time, you must obtain a Commercial Fishing License and trap tags.

It is illegal to destroy, disturb, or remove any traps belonging to others.

Two-Pole Permit: A person who has a valid resident or nonresident fishing license may purchase a two-pole permit. This permit authorizes the license holder to use two poles or rods at the same time on waters and during seasons specified by Commission Rule. Valid for all open water and salmon and steelhead fishing.

Fish Terms and Limits

Bag Limit: The maximum number of fish that may be legally harvested by any one person in one day. The term "bag limit" shall be construed to be an individual, independent effort and shall not be interpreted in any manner as to allow one individual to take more fish than their "bag limit" toward filling the "bag limit" of another. The bag and possession limits are equal, except where listed and for salmon and steelhead.

(Continued on Page 52)

It is illegal to fish in waters having special bag or species limits while in possession of fish in excess of those limits.

Clipped Adipose Fin: See diagram page 47. The adipose fin must be missing or nearly missing with a healed scar where the adipose fin is supposed to be located.

Game Fish: Brook, brown, bull, cutthroat, golden, lake (Mackinaw), rainbow (including steelhead), splake and Sunapee trout; trout hybrids; Chinook, coho, Atlantic, and kokanee (blueback) salmon; grayling; whitefish; cisco; crappie; perch; bass; catfish; bullhead; sunfish; sturgeon; northern pike; tiger muskie; walleye and sauger; and burbot (Ling). Bullfrogs and crayfish are also defined as game fish.

General Rules: The seasons, gear, and bag limits adopted for the region where you are fishing.

Harvest: Reduce a fish to possession.

Hybrid Fish: The offspring of two different species or subspecies of fish.

Limit is 0: Catch-and-release fishing is allowed but the fish species listed in the rule must be released after landing and may not be reduced to possession.

Nongame Fish: Any fish not specifically defined as a “game fish.” Protected nongame fish are Shoshone, Wood River, and Bear Lake sculpin, sand roller, northern leatherside chub, bluehead sucker and Pacific lamprey.

Possession Limit: Maximum number of fish that may be lawfully in possession of any person. Possession limit shall apply to fish while in the field or being transported. All fish that are hooked, landed, and not immediately released shall be counted in the possession limit of the person hooking the fish. The bag and possession limits are equal, except where listed and for salmon and steelhead.

Salmon, Chinook: Anadromous (ocean-run) salmon of the species *Oncorhynchus tshawytscha* in the Snake River drainage below Hells Canyon Dam, the Salmon River drainage, and the Clearwater drainage (excluding lakes and the North Fork of the Clearwater River above Dworshak Dam), and the Boise River, when stocked.

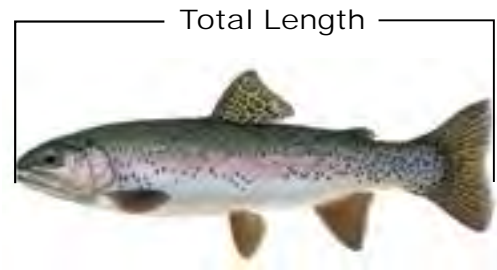
Season Limit: The maximum number of fish that may be legally taken in any declared season.

Special Rule Waters: Any water with a gear, season, or bag limit rule that is different from the general rule.

Steelhead: Rainbow trout longer than 20 inches in length in the Snake River drainage below Hells Canyon Dam, the Salmon River drainage (excluding lakes and the Lemhi and Pahsimeroi rivers), and the Clearwater river drainage (excluding that portion above Dworshak Dam, and lakes). Rainbow trout longer than 20 inches in length with a clipped adipose fin (as evidenced by a healed scar) are defined as steelhead in the Snake River from Hells Canyon Dam

upstream to Oxbow Dam, and in the Boise River from its mouth upstream to Barber Dam.

Total Fish Length: The length as measured from the tip of the snout to the end of the tail.



Boundary and Water Definitions

Confluence of a River or Stream: The point where two rivers or streams come together.

Diversion: A man-made structure designed to change the direction of flowing water in a stream.

Diversion Pond: A man-made pond holding water taken from a stream or reservoir. The diversion pond may be connected to the stream or reservoir by an open ditch or pipe.

Drainage: All water flowing into a common river or stream system, either above or below ground, due to area geography.

Fish Trap: Any man-made structure designed to capture fish.

Fish Weir: Any man-made structure placed in a water body to delay or divert migrating fish.

Flat Water: Water where there is no observable direction of flow.

Milepost: An official state highway marker which denotes a mile location. Milepost markers are typically found at one-mile intervals on Idaho highways.

Mouth of a River or Stream: The place where a river or stream enters a larger body of water.

Private Pond: A man-made, off-channel pond on private property. The owner may only stock the pond with fish after obtaining a private Pond Permit from Fish and Game.

Reservoir: The flat water level existing at any time within a reservoir basin. Unless noted otherwise, a stream flowing through the drawn down portion of a reservoir is not considered part of the reservoir.

Section: An area of river, stream, or reservoir between specific boundary locations.

Tributary: A stream flowing into a larger stream or lake.

Upstream: Moving from a lower elevation point in a stream towards a higher elevation point in the same stream.

Transport, Release, and Possession of Fish

Check Stations: If you have been hunting or fishing or have in possession game or nongame fish, you are required to stop at a check station established to inspect fish, game, or licenses.

Commercial Transport of Fish: If shipping fish by commercial carrier, the outside of the package must show: the number of fish; the species of fish; and the name, address, and fishing license number of the person who caught the fish.

Fish Possessed from State and Federal Fish Hatcheries: Fish can only be taken from a state or federal fish hatchery when given a written receipt for those fish or as allowed by posted signage.

Head and Tail Removal: It is illegal to have in the field or in transit any trout, char, coho, kokanee, grayling, tiger muskie, or bass from which the head or tail has been removed. For steelhead see page 43. For anadromous salmon see annual published special rules.

Holding Live Fish: No permit is required to keep game fish alive that have legally been reduced to possession, in a live well, net or on a stringer while at the body of water from which they were taken. All fish must be killed or released prior to leaving the water body. However, anadromous salmon and steelhead must either be killed or released after landing.

Movement and Introduction of Live Fish: It is illegal to release or allow the release of any species of live fish (including crayfish and bullfrogs), or fish eggs, in the state of Idaho without a permit from the director of Fish and Game. If you illegally introduce fish into a water body without a permit, you could be held financially liable for restoration costs.

Private Fish Pond: You are required to have a private pond permit from Fish and Game to own a private pond stocked with fish. Contact your local Fish and Game office for a permit application.

If you harvest fish from a licensed private pond, you must have a signed receipt for those fish while in transit between the pond and place of consumption/use.

Proxy Statement: You must have a proxy statement to transport fish for another person or accept as a gift any game fish. See page 48 for a proxy statement form. It must be signed by the taker, show the number and kind of fish, the date taken, the taker's address, and fishing license number.

Sale of Fish: Fish harvested by anglers cannot be bought or sold without a commercial license except as provided by Idaho code.

Transport between Commercially Licensed Fish

Hatcheries: Fish can be transported between licensed commercial fish facilities without additional permits from Fish and Game.

Waste of Game Fish: It is illegal to waste game fish.

Salvage of Fish

Fish salvage may be authorized when fish populations are threatened by water shortages or other causes. No salvage of fish from public waters will be allowed without Fish and Game authorization. When salvage is allowed, fish may be taken by snagging, spearing, archery, dip netting, seining, or by hand. Bag limits are typically removed. Use of toxic chemicals explosives, firearms, or electric current is prohibited. A valid fishing license is required. Anglers are reminded that access along canal banks and salvage fishing in most canals and ditches requires prior permission from irrigation companies.

Salmon and Steelhead Rules

Steelhead rules can be found on pages 43-47. Specific seasons and limits are subject to change by the Idaho Fish and Game Commission based on numbers of fish returning to Idaho from the ocean.

Seasons for anadromous (ocean-going) salmon are closed unless opened by special rule, which is published separately from general fishing rules. Look for separate rules pamphlets listing seasons and bag limits for anadromous salmon at vendors, Regional Offices, and on our website. Salmon rules are set annually by the Fish and Game commission.

Fishing in Boundary Waters

Bear Lake between Idaho and Utah: The holder of a valid Idaho or Utah fishing license may fish all of Bear Lake **except** in areas **closed** to all fishing by the respective states. Anglers are subject to the rules and regulations of the state in which they are fishing.

Snake River between Idaho and Oregon or Washington: The holder of a valid Idaho fishing license may fish the Snake River where it forms the boundary between the states of Idaho and Oregon or Washington, subject to the fish and game laws of Idaho but may not fish from the shore including wading, and may not fish in sloughs or tributaries on the Oregon or Washington side. An Oregon or Washington license holder has the same rights and restrictions with reference to the Idaho side.

Any angler who fishes on the Snake River or any other water forming an Idaho boundary is entitled to have in possession only the limit allowed by one license regardless of the number of licenses in possession.

Releasing Fish

Releasing fish is a good way to help maintain healthy populations and quality fisheries where angling effort is high.

Releasing fish is most effective when anglers strive to ensure that each fish caught and released has the maximum chance to survive after release.

You can do your part to increase fish survival by following these stress reducing practices:

- Use the proper size tackle to land the fish quickly, which can help minimize stress.
- Use barbless hooks to ease hook removal and minimize damage to the fish.
- Use of nets with non-abrasive materials will reduce loss of mucous and scales from the fish.
- Do not handle fish with dry hands.
- Do not squeeze the fish.
- Do not touch or hold fish by the gills, gill covers, or the eyes.
- Leave the fish in the water while removing the hook; holding fish upside down in the water often makes them easier to handle.
- If the hook is too deep to be easily removed, cut the leader. This will give the fish the best chance to survive.
- If the fish is exhausted, hold it in a swimming position in the water and gently move it back and forth until it is able to swim away.

Taking Photographs

Photographs of a trophy catch can provide priceless memories of a great fishing trip, but anglers should use care to take the photo responsibly. Here are things you can do to capture that special image and allow the fish to fight another day (remember – sturgeon can't be removed from the water):

- Have the camera ready and the shot framed before removing the fish from the water.
- When lifting a fish from the water, wet your hands before touching the fish and support the fish with both hands as you gently lift it from the water.
- Strive to hold the fish over the water so if it struggles from your hands it will fall back in the water and not onto a hard surface such as a rock or a boat floor.
- Hold the fish out of the water only as long as it takes to take a picture.

Reasons for Special Seasons

Listed under “Special Rule Waters” for each region you will see a number of waters with season dates different from their regional general stream and lake seasons. While they add complexity to the rules, they are designed to protect fish populations during vulnerable periods. The protection is needed to maintain or restore fish populations and to provide a diversity of fishing opportunities. For example:

- **Seasonal stream closures:** Most often these are spring closures to protect spawning native fishes (e.g. cutthroat

trout). Fall closures may be used in some locations to protect spawning bull trout and kokanee. The specific dates of seasonal closures may vary depending on the species and location. In general, these restrictions will apply where spawning fish are easily accessible to anglers, and where protection of spawners is important to conserve species or maintain populations of larger fish.

- **July 1 opener to harvest bass:** Designed to protect large bass during the vulnerable spring period and to reduce the overall annual harvest to provide a “quality” size structure — normally accompanied by other regulations which also restrict the size and number of fish harvested.
- **Closed to Fishing:** A last resort restriction in important spawning and nursery streams for species with critically low populations.

Reasons for Special Size and Bag Limits

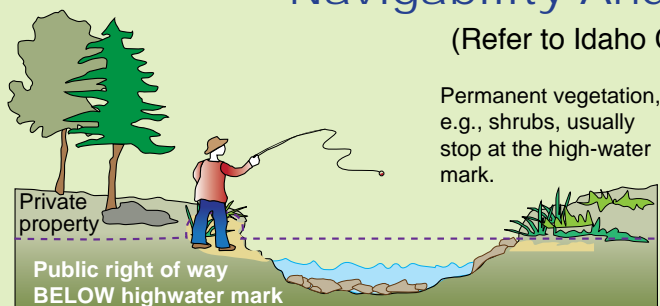
Harvest restrictions help maintain the overall numbers and size of fish in a lake or stream, and also ensure “fair share” so every angler has a chance to catch or harvest fish. Restrictive harvest rules are sometimes used simply to provide a different type of fishing experience or to maximize the size of fish available.

Idaho Fish and Game manages recreational fisheries to provide a variety of experiences using different combinations of size, gear, and bag limits. The range of harvest rules includes:

- General bag and size limits apply in typical harvest oriented fishing waters without gear or bait restrictions. Many of these waters are stocked with harvestable-sized hatchery trout.
- Wild trout management de-emphasizes angler harvest. For this reason a reduced bag limit of two trout is used to maintain wild trout populations. Additional size limits, gear, or bait restrictions may apply.
- Special size limits are used where the goal is to catch more and larger fish by giving up some harvest opportunity. A bag limit of two fish (trout or bass) and various size limits such as a 14- or 16-inch minimum or a 12- to 16-inch protected range are common.
- Trophy fish or large trout management may require more restrictive limits. For example, this could include catch-and-release rules or a bag limit of two fish (for both trout and bass) combined with length restrictions. Gear or bait restrictions may apply.
- Special cutthroat trout rules are implemented across most of the state to protect our state fish. Cutthroat trout are easily overfished, so various special rules are used to protect them from excess harvest. Many waters throughout the state have catch-and-release, restrictive bag or length limits, or other rules to protect cutthroat trout.

Navigability And Public Access

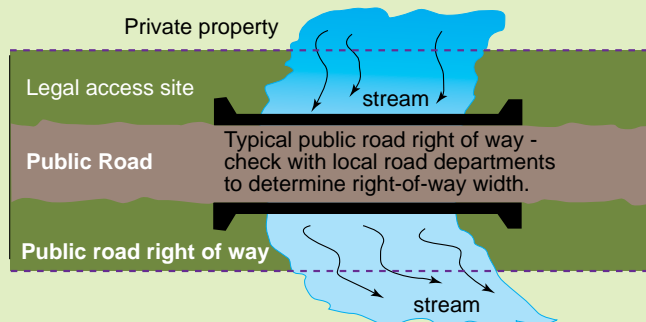
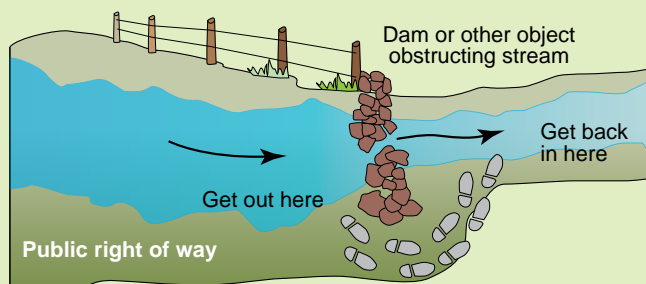
(Refer to Idaho Code 36-1601)



Navigable streams are defined as any stream which, in its natural high-water condition, will float logs or any other commercial or floatable commodity, or is capable of being navigated by oar or motor propelled small craft for pleasure or commercial purposes. Navigable streams are recognized as public transportation corridors, thus members of the public have the right to use the corridor, provided they enter and exit the corridor at a public right of way, and remain within the corridor. Many navigable streams flow through private property, thus it is important that anglers know their rights and responsibilities when fishing in navigable waters that flow through private property.

When fishing in navigable streams bordered by private property:

- You must stay within the normal high-water marks of the stream, unless you have landowner permission to get out on the bank, or have no other means of getting around an obstruction in the stream (such as a fence or diversion dam).
- When getting outside of the stream to go around an obstruction, take the shortest, most direct route around the obstruction to get back in the stream.
- Do not allow pets or children to trespass on adjacent private property, without landowner permission.
- You may enter and exit navigable streams at other public rights of way, such as county road bridges.
- **ASK FIRST!** Always get landowner permission before crossing private lands outside of a public right of way.



Trespass Law

(Refer to Idaho Code 36-1603)

It is illegal for anyone to post public land that is not held under an exclusive control lease. Conviction of trespass on posted private property carries a mandatory one-year revocation of hunting/fishing/trapping licenses. Federal law prohibits unauthorized trespass on Indian-owned reservation lands for hunting, fishing, or trapping purposes.

No person may enter land to hunt, fish, or trap without permission if the land is either cultivated or posted with legible "No Trespassing" signs every 660 feet. As an alternative to signs, property is legally posted when using a minimum of 100 square inches of fluorescent orange paint, except when metal fence posts are used, the entire post must be painted fluorescent orange. If the geography of the property is such that entry can reasonably be made only at certain points of access, such property is posted sufficiently if signs or markings are clearly visible at access points.



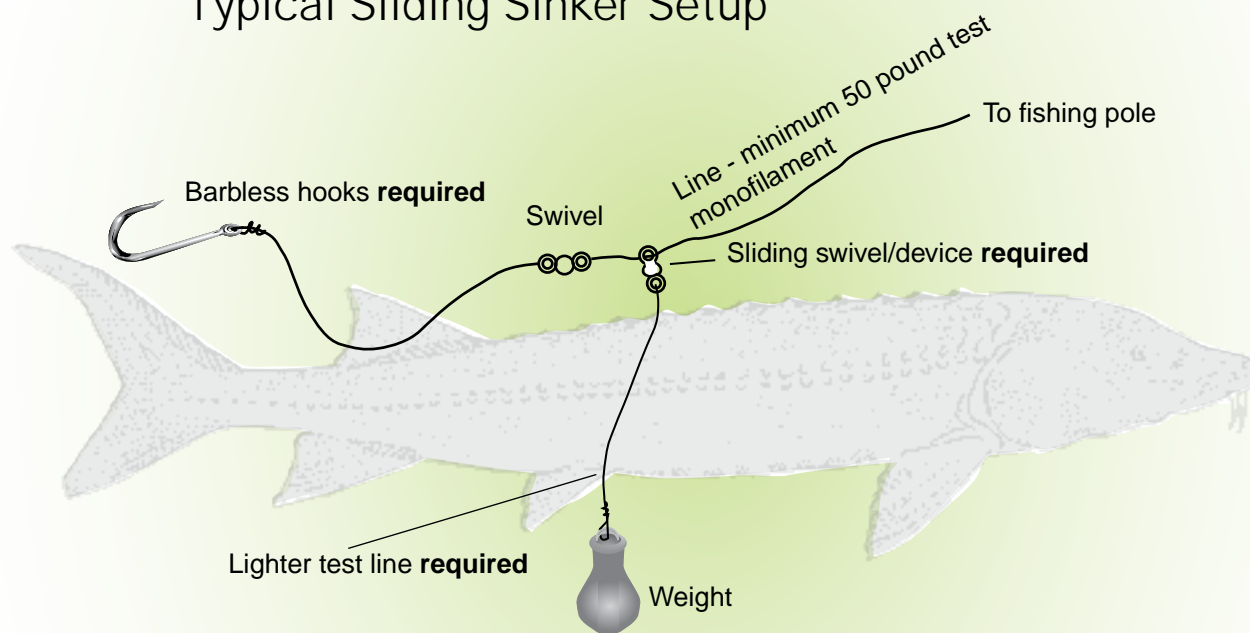
Sturgeon Fishing Rules

The white sturgeon is the largest freshwater fish in North America. To reach their maximum adult size of 8 to 10 feet or more, sturgeon must survive for many years. Accidental deaths result in fewer fish living the 25-50 years of age necessary to reach large sizes. The Idaho Department of Fish and Game believes a number of sturgeon deaths are caused by “ghost gear”—hooks and line broken off or discarded by anglers that are ingested by sturgeon. The following are some rules and fishing tips for sturgeon anglers designed to assist in catching fish and releasing them successfully.

Rigging up (see diagram below)

- When fishing for white sturgeon, by rule (IDAPA 13.01.11) anglers are required to use barbless hooks, a sliding swivel device to secure a weight, and a lighter test line to secure a weight to the sliding swivel or other device.
- We recommend a minimum of 50 pound test monofilament line on your reel. This greatly reduces the chances of breaking off your main line either with a fish on or when snagged.

Typical Sliding Sinker Setup



If You Catch a Sturgeon —

- **Sturgeon must not be removed from the water and must be released upon landing.**
- Sturgeon can be rolled onto their backs in the water before removing the hook. This generally calms the fish down making it easier to remove the hook.
- Do not grasp a sturgeon by the gills. Gills are the lungs of a fish and can be easily damaged.
- Do not mark, scar, or put a tail rope on sturgeon.
- If you break off, retrieve as much line as possible, using a boat if possible. Do not leave discarded line on shore or in the water. It is a real hazard to both fish and wildlife.

Idaho Fish Consumption Advisory for Selected Waters

A fish advisory means that you should monitor the amount of certain kinds of fish that you eat. For information call us toll-free at 1-866-240-3553 or visit www.fishadvisory.dhw.idaho.gov.

There is a statewide consumption advisory for both largemouth and smallmouth bass. The waters listed on this map also have consumption advisories for the following fish species:

- | | |
|--------------------|--------------|
| 1. Rainbow Trout | 8. Crappie |
| 2. Cutthroat Trout | 9. Walleye |
| 3. Brown Trout | 10. Catfish |
| 4. Lake Trout | 11. Bullhead |
| 5. Kokanee | 12. Perch |
| 6. Whitefish | 13. Carp |
| 7. Bluegill | 14. Sucker |



Priest Lake 4

Lake Pend Oreille 4, 6

Lake Coeur d'Alene 5, 11

Hells Canyon Reservoir 10, 13

Payette Lake 4

Brownlee Reservoir 8, 10, 12, 13

Payette River 14

Boise River 3

South Fork Snake River 3

Lake Lowell 13, 14

American Falls Reservoir 14

Portneuf River 1, 2, 3

Grasmere Reservoir 2

Chesterfield Reservoir 1

Jordan Creek 1

Oakley Reservoir 1, 9, 12

Glendale Reservoir 7, 8, 12

Shoofly Reservoir 2

Salmon Falls Creek Reservoir 1, 2, 9, 12

Weston Reservoir 12

Bear River 13

Official List of Idaho Record Fish

Trout & Salmon Family

Species	Weight	Length	Girth	Location	Angler	Date
Atlantic Salmon.....	13 lb. 4 oz.	29.75".....	17.75".....	Deadwood Res.....	Garrett Buffington.....	10/15/1995
Brook.....	8 lb. 3 oz.	25.5".....	16.5".....	Henrys Lake.....	Travis Elliott.....	6/16/1988
Brown.....	27 lb. 5 oz.	37".....	24".....	Ashton Reservoir.....	Wes Case.....	11/06/2007
*Bull (Dolly Varden).....	32 lb.	—.....	—.....	Pend Orielle Lake.....	Nelson Higgins.....	1949
Chinook (fresh water).....	42 lb.	41.25".....	29.75".....	CdA Lake.....	Jane Clifford.....	09/13/1987
Chinook (ocean run).....	54 lb.	—.....	—.....	Salmon River.....	Merrold Gold.....	1956
Coho.....	6 lb.	23.5".....	—.....	Cascade Res.....	Ted Bowers.....	09/19/1992
Cutthroat.....	18 lb. 15 oz.	—.....	—.....	Bear Lake.....	Roger Grunig.....	4/30/1970
Golden.....	5 lb. 2 oz.	—.....	—.....	White Sands Lake.....	George Wolverton.....	1958
Grayling.....	2 lb. 7 oz.	18 1/8".....	—.....	Nez Perce Lake.....	Velma Mahaffey.....	06/21/1992
Kamloops.....	37 lb.	—.....	—.....	Pend Oreille Lake.....	Wes Hamlet.....	1947
Kokanee.....	6 lb. 9.5 oz.	24.5".....	14.5".....	Priest Lake.....	Jerry Verge.....	06/09/1975
Lake (Mackinaw).....	57 lb. 8 oz.	49".....	32.5".....	Priest Lake.....	Lyle McClure.....	11/14/1971
Lake Whitefish.....	6 lb. 8 oz.	26".....	23.75".....	Pend Oreille Lake.....	Dale Hofmann.....	08/06/2010
Mountain Whitefish.....	5 lb. 14.4 oz.	22.5".....	14".....	Island Park Reservoir.....	Robert Hall.....	1997
Rainbow.....	20 lb. .02 oz.	34.25".....	22.25".....	Snake River.....	Michelle Larsen-Williams.....	7/29/2009
Rainbow/Cutt. Hybrid.....	34.74 lb.	41 1/8".....	27 1/8".....	American Falls Res.....	Mark Adams.....	7/25/2011
*Sockeye.....	5 lb.	24".....	—.....	Redfish Lake.....	June McCray.....	08/08/1970
Splake.....	10 lb. 12.5 oz.	28½".....	18 7/8".....	Ririe Reservoir.....	Brian Allison.....	05/12/2006
Steelhead.....	30 lb. 2 oz.	44".....	—.....	Clearwater River.....	Keith Powell.....	11/23/1973

Other Species

Black Crappie.....	3 lb. 9 oz.	17.5".....	15".....	Brownlee Reservoir.....	Jason Monson.....	06/08/2003
Bluegill.....	3 lb. 8 oz.	—.....	—.....	C.J. Strike Res.....	Darrell Grim.....	1966
Bluegill/P-seed Hybrid.....	1 lb. .03 oz.	9 7/8".....	10.25".....	Star Lane Pond.....	Kevin Graveline.....	05/08/2001
Bullhead Catfish.....	3 lb. 14 oz.	20.5".....	11 7/8".....	Brownlee Res.....	James Winter.....	05/25/1986
Channel Catfish.....	31 lb .8 oz.	38".....	23.5".....	Mann Lake.....	Kenny Decker.....	08/25/2001
Flathead Catfish.....	58 lb. 8 oz.	48".....	31".....	Brownlee Res.....	J. Newberry/K. McCormick.....	08/23/1994
Green Sunfish.....	5 oz.	7 3/8".....	6".....	Hauser Lake.....	Tom Fulton.....	05/26/1994
Largemouth Bass.....	10 lb. 15 oz.	—.....	—.....	Anderson Lake.....	Mrs. M.W. Taylor.....	—
*Ling (Burbot).....	14 lb.	—.....	—.....	Kootenai River.....	P.A. Dayton.....	1954
Northern Pike.....	40 lb. 2 oz.	51.5".....	22.75".....	Lower Twin Lake.....	Kim Fleming.....	08/06/2010
Pumpkinseed.....	14 oz.	9.75".....	10".....	Chase Lake.....	Bob Russell.....	1977
Smallmouth Bass.....	9 lb. 11. 5 oz.	23.75".....	20.5".....	Dworshak Reservoir.....	Dan Steigers.....	10/28/2006
*Sturgeon (Rod & Reel).....	394 lb.	—.....	—.....	Snake River.....	Glenn Howard.....	1956
*Sturgeon (Set Line).....	675 lb.	—.....	—.....	Snake River.....	Unknown.....	1908
Tiger Muskie.....	38 lb. 7 oz.	48.25".....	22.5".....	Hauser Lake.....	Douglas Butts.....	06/16/2001
Walleye.....	17 lb. 14 oz.	34.5".....	21 7/8".....	Oakley Reservoir.....	Damon Rush.....	9/10/2011
Warmouth.....	9.6 oz.	8.75".....	8.5".....	Snake River.....	Marvin Stevens.....	06/23/1988
White Crappie.....	3 lb. 12.8 oz.	17.5".....	15.75".....	Crane Creek Res.....	Trenten Smith.....	07/16/2012
Yellow Perch.....	2 lb. 9.6 oz.	15.5".....	—.....	Wilson Lake.....	Jerry Hamblin.....	01/03/1976
Yellow Perch.....	2 lb. 9.6 oz.	16".....	—.....	Cascade Reservoir.....	Bobby Shindelar.....	02/10/2012

*species that can no longer be harvested

Nongame

Common Carp.....	67.65 lbs.	47".....	34.5".....	C.J. Strike Reservoir.....	Scott Frazier II.....	07/23/2011
Chiselmouth.....	1 lb 2.6 oz.	14.25".....	8.375".....	Salmon River.....	Justin Powell.....	04/15/2003
Grass Carp.....	39 lbs 8.6 oz.	40.625".....	36".....	Snake River.....	Saige Wilkerson.....	07/16/2012
Largescale Sucker.....	8 lb. 6.7 oz.	26".....	—.....	Cascade Lake.....	Patrick Perry.....	04/30/2005
Peamouth Chub.....	1 lb 1 oz.	14.75".....	7.75".....	Clearwater River.....	Robert Riek.....	05/04/2004
Northern Pikeminnow.....	7 lb 14.2 oz.	25.25".....	16".....	Snake River.....	Emil Nowoj.....	05/07/2004
Tench.....	4 lb. 14 oz.	21".....	—.....	Spokane River.....	Scotty Brueher.....	2000
Tilapia.....	4 lb. 4.43 oz.	16".....	—.....	Swan Falls Reservoir.....	Jason Arneson.....	08/03/2008
Utah Chub.....	2 lb. 13 oz.	16.7".....	11.2".....	Lake Walcott.....	Alfred E. Woolstenhulme.....	02/07/2010
Utah Sucker.....	7 lb. 13.8 oz.	25.5".....	—.....	South Fork Snake River.....	Rick Thompson.....	08/20/2011

Updated 7/2012 sgm

Fish Identification

Illustrations © Joseph Tomelleri

Check for local fish consumption advisories at www.fishadvisory.dhw.idaho.gov



No black marks on dorsal fin



Bull Trout **No Harvest Allowed**

Olive green with brown above and on sides, shading to white on belly. Lacks wormlike markings as in BROOK TROUT. Upper body with yellow spots, sides with red or orange spots. No bluish halos around spots and white borders on fins less distinct than in BROOK TROUT. Tail is slightly forked. NATIVE.

Bluish halos



White border

Brook Trout

Dark green or blue black on back, to white on belly. Belly and lower fins may turn brilliant red in spawning males. Upper body and dorsal fin with mottled or wormlike markings. Sides with pale spots and reddish spots which may have bluish rings around them. Lower fins, including tail. Have distinct white leading edge. Tail square, or only slightly forked. INTRODUCED.

Spots light gray



Lake Trout (Mackinaw)

Dark gray or gray green above, belly light gray to white. Irregular shaped light gray spots on back, sides, dorsal fin and tail. Pink or blue spots ABSENT. White borders on fins less distinct than in BROOK TROUT. Tail deeply forked. Inhabits only large, deep lakes. INTRODUCED.



Cutthroat Trout

Red to orange slashes on underside of lower jaw. Body color variable. Back steel gray to olive green. Sides may be yellow brown with red or pink along belly. Spotting more closely grouped toward tail. May spawn in wild with rainbow. NATIVE.



Rainbow Trout

Body color variable. May be silvery in lakes and reservoirs. Back olive to greenish blue, belly white to silvery. Sides may show red or pink streak, white tip on pelvic (belly) and anal fin usually evident. Irregular spots on back, sides, head, dorsal fin and tail. Spots are more evenly distributed from head to tail on rainbow trout than cutthroat trout. NATIVE.

Sockeye Salmon



An anadromous (ocean going) relative of kokanee salmon. Non-spawning color is silver to steel blue. Males turn a bright red on the back and a darker red on the sides at spawning time. Females also turn red, but the red on the sides is somewhat darker. Sockeye typically spend two years in freshwater and one year in the ocean before returning to spawn in Idaho. NATIVE.

Juvenile Chinook Salmon



Tail fin is forked and usually tipped in black

Parr marks are large, oblong shapes.

**No Harvest Allowed
In waters with ocean-going
salmon or steelhead**

Juvenile Rainbow Trout/Steelhead

Dorsal fin has distinct, black-pigmented spots

Tail fin is square or slightly forked



Parr marks almost round



Kokanee (Blueback)

Back greenish blue with faint speckling and few if any spots. Sides and belly silvery. No distinct spotting in dorsal fin or tails as in RAINBOW. During spawning (September-December in both streams and shoreline gravels), bodies become 'leathery' and turn dark red to bright scarlet and heads dusky green. Spots are visible on the back half of the fish when in spawning coloration. Kokanee are native to the Payette lakes and the Stanley Basin lakes and have been established in other large lakes and reservoirs throughout the state. NATIVE.

Adult Chinook Salmon

Adults generally 18-40 inches in length. Irregularly shaped black spots on back, dorsal fin and tail. Teeth well developed. Black mouth and gum line. Adults return to Snake, Salmon and Clearwater rivers to spawn after 1-3 years at sea. Juveniles migrate to ocean after 18 months in streams. NATIVE.

Black mouth, black gums

Spots on entire tail fin



Adult Steelhead

Adults generally 20-40 inches in length. Irregularly shaped black spots on back, dorsal fin and tail. STEELHEAD are ocean-run rainbow which spawn in Snake, Clearwater and Salmon drainages; juveniles migrate to the ocean, return as adults after 1-2 years. NATIVE. See Pages 43-47.

Heavy spotting in dorsal and tail fins

Spots only on upper half of tail fin



Black mouth, white gums

Coho Salmon

Appearance similar to kokanee with spotting on back, dorsal and upper lobe of tail fin. Sharp teeth on tongue and roof of mouth. 14-16 rays in anal fin. Can be confused with rainbow trout in reservoirs. Chinook salmon can be distinguished from coho by black inside of mouth and gums, while coho have white or gray gums. INTRODUCED.

Blue-gray halos

No spots or
very few spots
on tail fin



Brown Trout

Back brown or olive with large black spots. Sides light brown to yellowish with numerous brown, black and red spots surrounded by halos of blue gray. Adipose fin usually with orange border. Few, if any, spots on tail. Tail slightly forked. INTRODUCED.



Mountain Whitefish

Color light grayish blue on back; silvery on sides; and dull whitish on belly. Small mouth without teeth. Five other species of whitefish are found in Idaho. NATIVE.



No Harvest Allowed

White Sturgeon

Five rows of bony plates or scutes; mouth directed downward; four barbels in front of mouth; size up to 10 feet in Snake, Salmon and Kootenai rivers. NATIVE. See Page 56 for more information.



Tiger Muskie

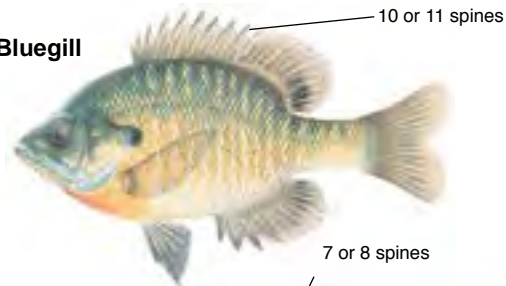
A sterile hybrid cross of a northern pike and a muskellunge. Olive green to dark gray color with VERTICAL MARKINGS on sides. INTRODUCED.



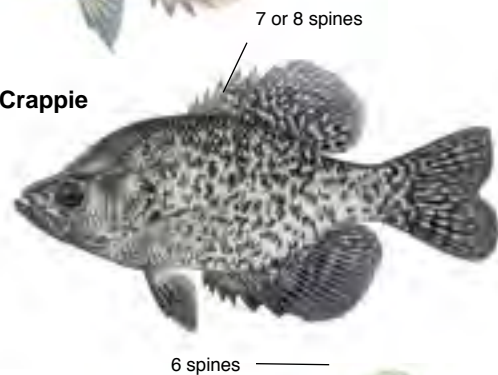
Northern Pike

Bluish-green to gray on back and sides with irregular rows of light-colored HORIZONTAL SPOTS on sides. INTRODUCED.

Bluegill



Black Crappie



White Crappie



Bluegill and Crappie

Have spines in the dorsal fin. Bluegill have a blue spot on the gill cover, the back is olive to dark green with a bluish luster, sides are bluish, belly is yellowish. Crappie are grayish to silvery green on the head, with lighter sides and a silvery-white belly. Heavy black spotting or splotches on body and fins. INTRODUCED.

Horizontal band



Jaw beyond eye

Largemouth Bass

Dark green on back and sides, belly white. Dark, irregular HORIZONTAL band along sides. Upper jaw, when closed, extends behind the eye. INTRODUCED.

Vertical bands



Jaw not beyond eye

Smallmouth Bass

Dark olive to brown on back, sides bronze, belly white. Dark VERTICAL bands on sides. Eyes reddish. Upper jaw, when closed, does NOT EXTEND behind eye. INTRODUCED.



Yellow Perch

Dark green back and yellow sides with 6 to 8 dark vertical bars. Front fin has sharp spines and cheek has serrated edges. INTRODUCED.



Walleye

Closely related to the yellow perch, but lacks vertical bars and has prominent "canine" teeth. Lower lobe of tail fin is white tipped. INTRODUCED.

Channel catfish

Forked tail



Bullhead

Rounded tail



Channel Catfish and Bullhead

MEMBERS of the catfish family have 4 pairs of barbels (whiskers), spines on their dorsal and pectoral fins, and no scales. Bullheads in Idaho are normally a more solid brown. INTRODUCED.

Does not have adipose fin



Northern Pike

(formerly the northern squawfish)

Body color has a general yellowish tone, back is dark olive green, sides are grayish-silver, belly is yellowish-white. Tail fin is distinctly forked, the mouth is large. Fins without spots. NATIVE.



Chiselmouth

Body color is dark grayish brown on back with lighter sides and a grayish white belly. Head is blunt, snout rounded, lower lip is curved with a hard cartilage that has a straight cutting edge (like a chisel). Average length 8-10 inches. Typically found in Snake River and impoundments from Boise to Lewiston. NATIVE.



Utah Chub

Body color is black to olive brown on back with yellowish sides and a silvery to white belly. Typically has a plump body and a small mouth. Average length 8-12 inches. Found in the Bear River and Upper Snake River drainage. NATIVE.

Buying a License/Residency Requirements

To Buy a License, Tag or Permit:

- In person, go to any Idaho Fish and Game office or license vendor throughout the state.
- Residents must have an Idaho driver's license to verify residency.
- By credit card, within the United States call 1-800-554-8685. Outside the U.S., use the Internet or mail. A service fee of 3 percent of the transaction plus \$5.50 is added for this transaction.
- Online go to <https://id.outdoorcentral.us/> 24-hours a day. A service fee of 3 percent of the transaction plus \$3.50 is added for this transaction.
- Commercial licenses, duplicate tags, documents that require proof of disability, lifetime licenses, and bear baiting permits may be purchased only at Fish and Game offices.

When buying licenses by telephone, the buyer, on request, will be assigned a validation number, which may be used in lieu of the actual license for 14 days from the date of issue. The information must read exactly as it appears on the license. When this number is used in lieu of the license, the person must carry their driver's license or identification card. A validation number may not be used in lieu of a tag. Purchasers must wait until tags or permits arrive. Call 208-334-3700 for more information.

Any license, tag or permit that is defaced or altered is invalid from the date and time of issue. It is unlawful to use or attempt to use any license that has been defaced or altered.

Your Social Security Number is Safe: The 1998 Idaho Legislature required that all applicants for licenses issued by the state, including hunting or fishing licenses, tags and permits, must give their Social Security number for a license or permit to be issued. The Idaho Privacy Law protects your Social Security number. It is considered confidential, will not be printed on your license and will not be given to any private person or organization.

Residency Requirements:

A previous year's license is not proof of residency. Proof of residency is required to buy any resident license.

1. Drivers must present: Any person who is a driver must have a valid Idaho driver's license and must have been domiciled in the state of Idaho for the last six months prior to purchasing a resident license, tag or permit.
2. Non-drivers must present: An Idaho identification card issued by the Department of Transportation; or a combination of two documents bearing your name and address but not issued by yourself.

Examples include:

- Home utility bills for the previous six months.
 - Rent receipts or mortgage statements for the previous six months.
 - Notarized statement from an employer on business letterhead.
 - Proof of voter registration dated six months prior.
 - For a minor child under 18, identification from a parent.
3. Military members: A member of the military service of the United States or a foreign country, state national guard or Air National Guard, together with spouse and children under 18 years of age, residing in his/her household, who have been officially transferred, stationed, domiciled and on active duty

in the state of Idaho for a period of 30 days last preceding application, as long as such assignment continues, is eligible to purchase a resident license.

To show eligibility you need: A current "Military Status and Residency Affidavit" signed by first sergeant, section commander or commander; or a current request and authorization for permanent change of station showing a 'report no later than' date within the last 60 days; or a combination of two documents given in number two (2) above dated thirty (30) days prior.

This is a summary of residency requirements, for additional details see Idaho Code 36-202(S) and 36-405; <http://www.legislature.idaho.gov/idstat/Title36/T36.htm> or contact your local fish and game officer. **Persons who do not qualify as residents must purchase a nonresident license.**

Nonresident:

You are considered a nonresident if you:

- File income taxes as a resident in another state.
- File a homeowner's exemption in another state.
- Have a driver's license in another state.
- Register to vote in another state.

Owning real property or paying property taxes within the state of Idaho is not a qualification for residency. No one can claim Idaho resident privileges while claiming resident privileges in another state, except military personnel.

License, Tag and Permit Fees

Updated January 2013

The amounts listed include all permits and application fees as of January 1, 2013. Fees may change without notice.
Licenses, permits, validations and tags expire **December 31**, except where noted.

Any person 14 years of age or older must have a valid license or permit to fish for fish, bullfrogs or crayfish in Idaho. No person shall fish without having the proper license on his or her person.

Any license, tag or permit which is defaced, altered or tampered with shall be invalid from the date and time of issuance. It is a violation to use or attempt to use any license, tag or permit that has been defaced, altered or tampered with by means of (but not limited to) erasures and type overs, or tears in the paper. Nonresident children under 14 years of age must be accompanied by the holder of a valid fishing license and their fish must be included in the license holder's limit in order to fish without a license, or they may purchase a nonresident license and have their own limit.

Resident children under 14 years of age need not be accompanied by the holder of a valid fishing license and they may have their own separate limit. A resident child under 14 may not purchase an annual fishing license and the associated two-pole permit. Resident children under 14 can purchase a two-pole permit without a fishing license.

A resident child under 14 may purchase a salmon or steelhead permit without a license so that he or she may catch his or her own limit of steelhead or salmon.

Fishing on Indian reservations may require tribal licenses and adherence to tribal regulations.

Youth licenses

Sportsman's Package ¹	\$124.25
Junior Combination Hunting and Fishing (14-17)	17.50
Junior Hunting (12-17)	7.25
Junior Fishing (14-17)	13.75
Youth Small Game Hunting (10-11)	7.25
Trapping ²	7.25

Senior license 65 years and older (5 years residency prior to license purchase required)

Combination Hunting and Fishing	\$11.75
---------------------------------	---------

Permits and Validations

Archery Permit	\$18.25
Muzzleloader Permit	18.25
Hound Hunter Permit	12.75
Bear Baiting Permit ²	12.75
WMA Pheasant Permit (17+ years)	23.75
Sage/Sharp-tailed Grouse Permit	4.75
Migratory Bird Permit	1.75
Handicapped Archery Permit ³	1.75
Handicapped Motor Vehicle Permit ³	1.75
Salmon Permit	12.75
Steelhead Permit	12.75
Two-Pole Permit	13.75

Adult Tags

Deer	\$19.75
Elk	30.75
Bear	11.50
Second Bear	11.50
Mountain Lion	11.50
Second Mountain Lion	11.50
Gray Wolf	11.50
General Turkey	19.75
Extra Turkey	12.25
Special Unit Turkey	5.00
Sandhill Crane	15.00
Pronghorn	31.25
Moose, Bighorn Sheep, Mountain Goat (controlled hunt tag only, does not include application fee, see below)	166.75

Youth, Senior, and DAV Tags⁴

Deer ⁴	\$10.75
Elk ⁴	16.50
Bear ⁴	6.75

Idaho Residents

Adult licenses:

18 years of age and older

Sportsman's Package ¹	\$124.25
Combination Hunting and Fishing	33.50
Disabled Combination	
SSI, SSDI, DAV	5.00
Military Furlough Combination	17.50
Hunting	12.75
Fishing	25.75
Disabled Fishing	5.00
Military Furlough Fishing	17.50
Trapping ² (expires June 30)	26.75
Taxidermist/Furbuyer - 1 year ² (expires June 30)	40.00
Taxidermist/Furbuyer - 5 year ² (expires June 30)	176.75

Second Bear ⁴	6.75
General Turkey ⁵	10.75
Extra Turkey ⁵	10.75

Controlled Hunts

Resident Controlled Hunt Application	\$6.25
Turkey Controlled Hunt permit	\$7.75

Resident Disabled Licenses

Anyone certified as eligible for federal supplemental income (SSI), social security disability income (SSDI), railroad retirement board disability, a nonservice-connected veteran's pension, or a service-connected veteran's disability benefit with 40 percent or more disability, may qualify for a "disabled" license. Bring current year documentation when applying. Disabled licenses may be purchased at Fish and Game offices, selected license vendors (see website for list), and through the mail.

Resident Lifetime License Certificates

Regardless of your age, purchase of a lifetime license could be the best investment you ever make. Lifetime combination hunting and fishing licenses authorize all privileges associated with a corresponding annual license. These licenses are valid for the lifetime of the license holder and are available to all Idaho residents. If a lifetime certificate holder moves out of Idaho, they will continue to receive an annual license, but they will have to pay nonresident tag and permit fees. The lifetime certificate does not include tags and permits. Lifetime certificates can be purchased at Idaho Fish and Game headquarters and regional offices only.

Applicant Age	Combination	Hunting	Fishing
0 - 1 year	\$795.50	\$276.75	\$601.75
2 - 50 years	\$1,113.00	\$386.75	\$841.75
51 and older	\$636.75	\$221.75	\$481.75

Note: Commercial licenses, duplicate tags, lifetime license (renewal beginning second year of ownership), bear baiting permits, and bobcat and otter pelt tags (pelts are tagged at regional offices and the Hunter Education Center only) are available only at Idaho Fish and Game offices.

For licenses not listed, please visit our web page at:

<http://fishandgame.idaho.gov>.

Nonresident

Combination Hunting and Fishing	\$240.00
Hunting	154.75
(A nonresident hunting license includes a three-day fishing license)	
Small Game Hunting (Not valid for the first 5 days of	

pheasant season. Valid for upland & migratory game birds, turkeys, cottontail, snowshoe hare, huntable furbearers and unprotected and predatory birds and animals)

Three-Day Nonresident Small Game Hunting
(Not valid for the first five days of pheasant season. Valid for upland and migratory game birds, turkeys, cottontail, snowshoe hare, huntable furbearers and unprotected and predatory birds and animals)

Nongame Hunting (valid January to August)	35.50
Shooting Preserve Hunting	23.75
Season Fishing	98.25
Daily Fishing (first day)	12.75
Each consecutive day at initial time of purchase add	6.00

Three-day Salmon/Steelhead (includes three-day general fishing license)	37.50
Trapping ² (expires June 30)	301.75
Taxidermist/Furbuyer ² (expires June 30)	170.00

Junior Mentored & Youth Licenses

Junior Mentored Hunting ⁶ (12-17)	\$31.75
Youth Small Game Hunting ⁶ (10-11)	20.00
Junior Fishing (under 18)	21.75
Daily Fishing (first day)	12.75
Each consecutive day at initial time of purchase add	6.00
Three-day Salmon/Steelhead (includes three-day general fishing license)	37.50

Permits and Validations

Archery Permit	\$20.00
Muzzleloader Permit	20.00
Hound Hunter Permit ²	169.75
Bear Baiting Permit ²	31.75
WMA Pheasant Bird Permit (17+ yrs)	51.75
Sage/Sharp-tailed Grouse Permit	4.75
Migratory Bird Permit	4.75
Handicapped Archery Permit ³	1.75
Handicapped Motor Vehicle Permit ³	1.75
Salmon Permit	25.75
Steelhead Permit	25.75
Two-Pole Permit	15.50

Adult Tags

Deer (Regular or White-tailed)	\$301.75
Elk	416.75
Bear	186.00
Reduced Bear	31.75
Second Bear	31.75
Mountain Lion	186.00
Reduced Mountain Lion	31.75
Second Mountain Lion	31.75
Gray Wolf	31.75

Turkey	80.00
Extra Turkey.....	80.00
Special Unit Turkey	5.00
Sandhill Crane.....	15.00
Pronghorn	311.75
Moose, Bighorn Sheep, Mountain Goat (Controlled hunt tag only, does not include application fee, see next page)	\$2,101.75

Junior Mentored Tags⁷

Deer (Regular, White-tailed) ⁷	\$23.75
Elk ⁷	39.75
Bear ⁷	23.75
Second Bear ⁷	23.75
Turkey ⁸	19.75
Extra Turkey ⁸	19.75
Controlled Hunt	
Controlled Hunt Application.....	\$14.75
Turkey Controlled Hunt Permit	7.75

Nonresident Disabled Vets Licenses and Tags

A new state law extends reduced license and tag fees to nonresident disabled American veterans participating in a hunt in association with a qualified organization.

To qualify for reduced license and tag fees, nonresident disabled veterans must meet the definition and provide documentation listed below to an Idaho Fish and Game office in person or by mail to: License Supervisor, P.O. Box 25, Boise, ID 83707.

- A letter from the Veterans Affairs office verifying a service-connected disability rating of 40 percent or more. The letter can bear any date prior to license application.
- A current letter from a qualified organization documenting that the license applicant is participating in a hunt in association with the organization.
- Documentation that the organization is a nonprofit under section 501(c)(3) or 501(c)(19) of the Internal Revenue Code and qualified to offer opportunities, experiences and assistance to disabled veterans, or the qualified organization is a government agency with a mission to offer opportunities, experiences, and assistance to disabled veterans

Nonresident disabled veterans meeting these conditions may be eligible for reduced fees, which are: a hunting license \$5; deer tag \$10.75; elk tag \$16.50; bear tag \$6.75; and turkey tag \$10.75.

Notes:

¹ The sportsman's package includes hunting and fishing licenses, and deer, elk, turkey, bear, wolf and mountain lion tags, and archery, muzzleloader, salmon, and steelhead permits.

² Available only at Idaho Fish and Game offices.

³ Disability must be certified by a medical doctor on a Fish and Game form.

⁴ Must have a senior combination license, a Junior combination or hunting license, or a DAV combination license.

⁵ Must have a senior combination license, a Junior combination or hunting license, or a DAV combination license, or a Youth Small Game hunting license.

⁶ Anyone hunting with this license must be accompanied in the field by an adult license holder close enough to be within normal conversation or hearing range without shouting or the aid of electronic devices.

⁷ Must have a Junior Mentored hunting license. The accompanying adult must have a tag(s) for the same species, valid in the same area(s). The junior mentored deer tags are not valid for bear or mountain lion. Price not valid for leftover nonresident, general season deer or elk tags purchased as second tags.

⁸ Must have a Junior Mentored hunting license or a Youth Small Game hunting license.

Note: Nonresident lifetime license holders must buy tags at Fish and Game offices if nonresident deer and elk tags are sold out.

For licenses not listed, please visit our web page at: <http://fishandgame.idaho.gov>.

Super Hunt

The first Super Hunt ticket for each species costs \$6; each additional ticket for that species purchased at the same time costs \$4. The first Super Hunt Combo ticket costs \$20; each additional ticket purchased at the same time costs \$16.



If you suspect an illegal fish release has occurred or may occur, report it to the nearest IDFG representative, or call the CAP toll-free number 1-800-632-5999. Callers do not have to reveal their names. A reward may be paid if an arrest is made or a citation is issued to the suspected violator.



WIN THE HUNT OF A LIFETIME

Every year, 32 lucky hunters walk into the field with special **Super Hunt** tags in their pockets. These tags allow a hunter to pursue an elk, deer, antelope or moose in any open hunt in Idaho. Hunters who have won this privilege call it a "hunt of a lifetime."

The thrill is quadrupled for two **Super Hunt Combo** winners who are able to hunt all four species in any open hunt. This unqualified freedom to pursue world-class big game in Idaho is an experience winners will long remember.

One entry for as little as \$6 offers you the chance to win in the Super Hunt drawings. When you buy more, you receive a discount.

- A single **Super Hunt** entry for a specific species costs \$6, then each additional entry for the same species is \$4.
- A single **Super Hunt Combo** entry costs \$20 and each additional entry costs \$16.

Super Hunt tags are in addition to any general and controlled hunt tags a hunter has applied for or may already hold. All other rules of individual hunts apply.

Stories from Super Hunt winners and additional information can be found on Idaho Fish and Game's website: <http://fishandgame.idaho.gov/public/hunt/superhunt>

How to Enter

- ✓ **Fill** out the entry order form.
- ✓ **Mark** the species you hope to hunt and the number of entries you want.
- ✓ Add up the fees and make a check payable to Idaho Department of Fish and Game.
- ✓ Send the order form along with the check to Idaho Fish and Game headquarters at: **IDFG License Section, P.O. Box 25, Boise, ID 83707**
- ✓ Idaho Fish and Game **will enter** the number of entries you've requested and send you a printed receipt with your ticket numbers.

Tickets are available from Fish and Game offices and license vendor, and over the phone at 1-800-554-8685 or at http://fishandgame.idaho.gov/buy_online. Online and telephone vendors add additional processing fees.

Super Hunt Drawings

Idaho Fish and Game has two Super Hunt drawings, one in June and another in August. Hunters may enter both drawings as many times as they like.

Entries for the **first drawing** must be received at Fish and Game headquarters **no later than May 31**. Winning numbers will be drawn in June.

Entries for the **second drawing** must be received at Fish and Game headquarters **no later than August 10**. Winning numbers will be drawn in August.



IDAHO SUPER HUNT ORDER FORM

Please print

NAME _____
ADDRESS _____
CITY _____ STATE _____ ZIP _____
TELEPHONE (_____) _____
DATE OF BIRTH _____ (mo) _____ (day) _____ (year)
HEIGHT _____ WEIGHT _____ HAIR COLOR _____
EYE COLOR _____ GENDER _____

- ✓ Choose the species you hope to hunt and the number of entry.
- ✓ The first entry for each species is always \$6 and each additional entry is \$4.
- ✓ Add up the fees for a grand total and write a check payable to Idaho Dept. of Fish and Game.
- ✓ Mail order form and check to **IDFG License Section, P.O. Box 25, Boise, ID 83707**

DEER

First Entry = \$6.00
____ Additional Entries @ \$4.00 = _____
Total \$ _____

ELK

First Entry = \$6.00
____ Additional Entries @ \$4.00 = _____
Total \$ _____

MOOSE

First Entry = \$6.00
____ Additional Entries @ \$4.00 = _____
Total \$ _____

PRONGHORN

First Entry = \$6.00
____ Additional Entries @ \$4.00 = _____
Total \$ _____

TOTAL FOR ALL SPECIES

\$ _____

First Drawing

Entries must be at Fish and Game headquarters by May 31.

Tickets submitted for the first drawing WILL NOT be eligible for the second drawing.

Second Drawing

Entries must be at Fish and Game headquarters by August 10.

IDAHO SUPER HUNT COMBO ORDER FORM

The Super Hunt Combo allows the winner to hunt all four species - deer, elk, pronghorn and moose - in a single season.

Please print

NAME _____
ADDRESS _____
CITY _____ STATE _____ ZIP _____
TELEPHONE (_____) _____
DATE OF BIRTH _____ (mo) _____ (day) _____ (year)
HEIGHT _____ WEIGHT _____ HAIR COLOR _____
EYE COLOR _____ GENDER _____

- ✓ The first Super Hunt Combo entry is \$20 and each additional entry is \$16.
- ✓ Add up the total cost and write a check payable to Idaho Dept. of Fish and Game.
- ✓ Mail order form and check to **IDFG License Section, P.O. Box 25, Boise, ID 83707**

SUPER HUNT COMBO

First Entry = \$20.00
____ Additional Entries @ \$16.00 = _____

TOTAL \$ _____